

The GUIDE to DOWNTOWN Missoula



- Dining
- Shopping
- Entertainment
- Arts & Culture
- Community Events
- Riverfront Access
- Caras Park
- Zero Fare Bus Service
- Walking Tours
- Parking Information
- ...and more!*

missouladowntown.com



Contents

5	About the MDA Advocates for a vibrant Downtown Missoula
6	Dine Breweries, pubs, restaurants, & more!
16	Shop Downtown shopping—as unique as you!
24	Stay Enjoy abundant accommodations
28	Play Galleries, museums, river access, events & more!
32	Businesses & Services Community-minded business to serve you
46	Tours / Historic Districts Public art, historic buildings, Missoula treasures
58	Parking Information Parking structures & on-street parking information
60	Missoula Map City-wide map of Missoula

© 2025 Downtown Missoula Partnership
218 East Main Street, Missoula, MT 59802 (406) 543-4238
Cover image by Athena Photography
Contributing Photographers: Art & Image, Athena Photography,
Downtown Missoula Partnership



Welcome to Missoula

Downtown Missoula is the vibrant heart of our community —a lively, welcoming hub that showcases the best of what the Rocky Mountain West has to offer. It's where connections are made, stories are shared, and the richness of community thrives. As the epicenter of commerce, culture, dining, and entertainment, Downtown Missoula offers a unique blend of locally owned shops, art, outdoor recreation, and Montana's signature hospitality.

Downtown is more than just a destination—it's a symbol of our quality of life and contributes to:

- A Thriving Economy
- Exceptional Quality of Life
- Our Community's History & Identity
- Local Pride
- Business and Employment Opportunities

A strong and vibrant Downtown benefits all of Missoula by:

- Keeping money in the local economy
- Supporting the health of surrounding neighborhoods
- Nurturing small businesses and entrepreneurs
- Enriching community projects through local businesses
- Employing over 14,000 Missoulians
- Bringing people together to build a stronger, connected community

Downtown Missoula Partnership



The Downtown Missoula Partnership is a unified entity comprised of the **Missoula Downtown Association (MDA)**, the **Business Improvement District (BID)**, and the **Missoula Downtown Foundation (MDF)**. Each plays a unique role in supporting and enhancing our community.

The **Missoula Downtown Association** is a nonprofit, membership-based organization committed to fostering a vibrant, thriving Downtown Missoula for the benefit of the entire community. Established in 1975, the MDA works to sustain Downtown as Western Montana's hub for business, culture, and entertainment.

The **Downtown Business Improvement District** was formed in 2005 to bring Downtown property owners together to maintain and manage shared public spaces. In 2020, the BID Assessment was renewed for another ten years with 75% approval from property owners within the district. Dedicated to keeping Downtown clean, safe, and economically vibrant, the BID oversees garbage and recycling services, graffiti and snow removal, business development initiatives, research, and more.

The **Missoula Downtown Foundation** is a 501(c)3 nonprofit dedicated to charitable and educational efforts that enhance arts, culture, livability, economic vitality, safety, and infrastructure throughout Downtown Missoula. Established in 2010, the MDF's mission is to provide funding for key projects and improvements that shape the future of Downtown.

Signature DMP Events

The DMP hosts a variety of events that bring people together to celebrate and enjoy Downtown Missoula, including:

- **Winter Brewfest** (late February)
- **Garden City Brewfest** (First Saturday in May)
- **Out to Lunch Summer Series** (Wednesdays June - August)
- **Downtown ToNight Summer Series** (Thursdays, June - August)
- **River City Roots Festival** (late August)
- **Holidays on Higgins & Lighting of the Tree** (First Saturday in December)

Beyond events, the DMP dedicates resources to:

- Advocacy and the implementation of the Downtown Master Plan
- Membership services, including gift cards, business guides, and planning tools
- Collaborative marketing campaigns and seasonal promotions for members
- Fostering partnerships among local businesses, nonprofits, and local leadership
- Member-to-member collaborations and networking events
- Support of the Downtown Flower basket program (over 150 baskets annually) and seasonal holiday decor

Learn More

Explore all that Downtown Missoula has to offer at missouladowntown.com or visit us in person at 218 East Main Street.

Thank you for making Downtown Missoula your destination to shop, dine, stay, work, and connect with our vibrant community!

Dine

Downtown Missoula stands out as Montana's premier destination for an exceptional array of food and beverage experiences. With many MDA members earning national acclaim for their outstanding offerings, it's a must-visit for culinary enthusiasts.

Pubs & Bars

AC Hotel Missoula Downtown

175 N. Pattee (406) 549-0119
marriott.com/hotels/travel/msoac-ac-hotel-missoula-downtown

Located in Downtown Missoula, in close proximity to a variety of attractions and local restaurant. Be sure to enjoy the seasonal rooftop bar!

The Badlander, Locals Only, Golden Rose & 3-in the Side

208 Ryman (406) 529-9377
thebadlander.com

Multiple bars, offering a wide variety of food, adult beverages, dancing and gaming. All under one roof in the Historic Palace Building.

Bar Plata

107 N. Higgins (406) 456-7156
barplatamissoula.com

Spanish inspired cocktail bar featuring snacks and a high energy atmosphere.

Flippers Tavern

125 S. 3rd St. W (406) 721-4895

Flippers Tavern~Grill~Casino is a great neighborhood bar, for young and old alike, with fantastic burgers, great beers, and friendly people

James Bar / Al's & Vic's

119 W. Alder (406) 728-4804
jamesbarmontana.com

An unusual connection between Missoula's oldest and Missoula's hippest pubs. Old-style drinks and pool at A&Vs. Modern menu, cocktails, and outdoor seating at the James Bar.

Oxford Saloon

337 N. Higgins (406) 549-0117

Missoula's most famous historical landmark. Known for its brains & eggs and browns & gravy. Open 24 hours per day.

Press Box

835 E. Broadway (406) 721-1212
pressboxmt.com

Welcome to the Press Box, where sports fans and Griz fans will truly feel at home.

Red's Bar

217 Ryman (406) 728-9881

Downtown Missoula's go-to sports bar with multiple screens, games, and a great jukebox. Open daily.

The Rhinoceros

158 Ryman (406) 721-6061

More than 50 beers on tap, plus countless more in the bottle. Go around the world in 50 beers or play pool. Summer alley patio.

Stockman's Bar

125 W. Front (406) 240-5596

No-frills watering hole for shots and beers, with DJs and poker on most nights, and periodic beer pong.

VFW Post 209

245 W. Main (406) 728-7749
vfwpost209.org

VFW is a 501 (c3) and 501 (c19) Veterans organization that exists to help veterans and their families with VA benefits, awards, and general welfare. The bar is open to the public with great bartenders and fun crowd!

Casual Dining

Basal

114 N. Higgins (406) 249-3326
basalhospitality.com

Located in the historic Missoula Mercantile Pharmacy downtown, Basal offers delicious food and beverages, specializing in unique salads, coffee, sipping broth, and convenient grab and go options.

Biga Pizza

241 W. Main (406) 728-2579
bigapizza.com

Modern Downtown dining with traditional and special brick oven pizza, calzones, salads, sandwiches, specials and desserts, using a time-honored Italian method for dough making.

Bridge Pizza

600 S. Higgins (406) 542-0002
Bridgepizza.com

Local, family-owned and operated business that prides itself on great food and friendly service.

Conflux Brewing Company

210 N. Pattee (406) 926-3589
confluxbrewing.com

Local, family-friendly brewery and restaurant with focus on high-quality Montana ingredients. Enjoy the atmosphere of the two-story building, outdoor patios, and outdoor fire pit.

Cranky Sam Public House

233 W. Main (406) 540-4325
crankysam.com

Cranky Sam Public House, nestled in the heart of downtown Missoula on Main Street, is a haven for those seeking a top-notch selection of beer, wine, craft cocktails, and delicious food.

Doc's Sandwich Shop

214 N. Higgins (406) 542-7414
docsgourmet.com

Great hot and cold sandwiches, homemade soups, salads, beverages and desserts. Famous for Hangover Stew. Dine-in, delivery, catering. Open weekdays.

Double K Ranch Deli

2700 Paxson (406) 926-3589
doublekranchmt.com/deli

The Double K Ranch Deli was created with the goal of sourcing a meat shop and restaurant with only local meat.

El Cazador

2209 South Ave W. (406) 728-3657
elcazadormissoula.com

Authentic Mexican cuisine prepared by the Hernandez family. Beef, chicken, seafood, beer, wine and the best margaritas around. Food truck and catering available. Open daily.

Five on Black

325 N. Higgins (406) 926-1860
fiveonblack.com

Brazilian cuisine with buffet-style large and small bowls filled with delicious meats, vegetables, sauces and toppings for a great price.

Golden Yolk Griddle

200 W. Pine (406) 480-6355
goldenyolkgriddle.com

Offering consciously sourced breakfast throughout the week to the good people of Missoula in their corner shop location.

Good Food Store

1600 S. 3rd St. W. (406) 541-3663
goodfoodstore.com

Award-winning salad bar, soup bar, and hot bar, fresh baked pizza from a Fire Deck, and build-your-own rice & noodle wok bowls. Enjoy custom espresso drinks, along with an array of fresh juices, smoothies, and kombucha.

Iron Horse Brew Pub

501 N. Higgins (406) 728-8866
ironhorsebrewpub.com

Great drinks, great food, great people, great atmosphere, and Missoula's best outdoor dining. Where you'll always find someone you know. Open daily.

Jimmy John's

420 N. Higgins (406) 542-1100
jimmyjohns.com

Franchise sandwich shop specializing in delivery. Sandwiches made fresh. Dine-in and catering available.

Masala

206 W. Main (406) 926-6444
masalamt.com

Missoula's Eastern Indian restaurant with a brand-new brick & mortar location at Main & Ryman. Featuring vegetarian and gluten-free items.

Nautical Bowls

1220 S.W. Higgins Ave. #4
(406)317-1832 nauticalbowls.com/

Super Foods, Super Fuel, Super Life! Nautical Bowls menu is 100% gluten free, dairy free, soy free, nutrition packed super foods ready to fuel your life

The Notorious P.I.G. BBQ

247 W. Front (406) 493-8028
thenotoriouspigbbq.com

Missoula's locally-owned, award-winning barbecue with fresh-smoked meats prepared daily.

Old Post Pub

103 W. Spruce (406) 540-4433
oldpostmissoula.com

Local pub serving brunch, burgers, cocktails and more. Live music and great late-night menu.

The Still Room

1609 W. Broadway (406)543-5678

The Still Room is dedicated to crafting top-quality cocktails, beer, and food with locally sourced Montana ingredients, house-pressed juices, and premium liqueurs.

Tamarack Brewing Company

231 W. Front (406) 830-3113
tamarackbrewing.com

Handcrafted ales and fantastic pub fare in a family-friendly environment. Two stories, two outdoor patios riverside, large screen televisions in the lower level.

Tagliare Delicatessen

1433 S. Higgins (406) 830-3049
tagliaredelicatessen.com

Italian deli offering sandwiches, market goods, cheeses & meats, and wine. Fresh local and imported Italian ingredients.

Tea & Crepe

140 N. Higgins Ste.103
(406) 493-0271 teaandcrepe.com

Tea & Crepe is a unique culinary concept that combines the rich flavors of boba tea, the delicate textures of crepes, the comforting simplicity of Onigiri rice balls, and fresh made-to-order Thai ice cream rolls.

Thomas Meagher Bar

130 W. Pine (406) 540-4402
thomasmeagherbar.com

Irish pub and sports bar in a newly-remodeled historic building. Full-service bar with dynamic pub menu featuring multiple versions of mac and cheese.

Cafe Mimosa

101 N. Higgins (406) 546-0972
cafemimosamt.com

Cafe Mimosa is where Missoulians and visitors alike immerse themselves at the confluence of art, eclectic cuisine, progressive cocktails and sunbeamy vibes.

Union Club Bar & Grill

208 E. Main St. (406) 728-7980

Grab your friends and come on down to Union Club Bar & Grill. Whether you want a delicious meal, a drink or an evening of karaoke, we're the place!

Wally & Buck

319 E. Front (406) 370-8264

wallyandbuck.com

Gourmet burgers with locally sourced ingredients.

Whiz Kid

147 W. Broadway (406) 544-7210

whizkidoriginal.com

Whiz Kid makes the famous no fuss cheesesteak (or cheeseshroom) sandwich you desire!

Worden's Market & Deli

451 N. Higgins (406) 549-1293

wordens.com

Local market featuring an extensive beer, wine, specialty food and grocery selection. Full service deli, take home meals, catering and more! Walk-In Humidor as well. Find what you need at Worden's!

Fine Dining

1889 Steak - Seafood - Spirits

104 N. Higgins (406) 529-1263

1889Missoula.com

A traditional steakhouse offering classic cuisine with subtle modern touches. Our menu includes a variety of prime grade steaks, fresh seafood, and unique entrees featuring local ingredients.

Brasserie Porte Rouge

231 E. Front (406) 541-0231

brasserieporterouge.com

Hearty French cuisine focused on simplicity and superb execution, with a varied wine list, 12 taps, and an oyster bar.

Ciao Mambo

541 S. Higgins (406) 543-0377

ciamambo.com

Traditional Italian cuisine with a fun family atmosphere, wonderful service, friendly attitudes and a great wine menu. Frank Sinatra would love this place!

DELICATESSEN

CATERING

WORDEN'S
EST. MARKET 1883

BEER AND WINE

MARKET

451 N. Higgins Missoula, MT 59802 • (406) 549-1293 • wordens.com

The Depot

201 W. Railroad (406) 728-7007
depotmissoula.com

Downtown Missoula's oldest dinner destination since 1974. Offering beef and fresh seafood, homemade desserts, and casual dining on the summer deck.

FINN

100 Madison St. (406) 542-4660
finnmissoula.com

FINN gives surf and turf a contemporary twist and provides guests with an authentic Missoula experience.

Florabella

500 Brooks St. (406) 546-0276
florabellamissoula.com

Florabella brings the cuisine and wine of Italy to the beautiful Rose Park neighborhood of the Garden City.

Iron Griz

515 South Ave E. (406) 728-5106
irongriz.com

Serving appetizing dining experiences focused on providing seasonal menus, designed around foods grown from the garden. Farm-to-table restaurant nestled against Mount Sentinel.

Hana

131 S. Higgins, Parkside
(406) 549-7979 sushimissoula.com

The first best sushi bar in the last best place.

Michi Ramen Bar

137 W. Front (406) 926-1186
michimissoula.com

A collaboration between chef Drake Doepke and the creatives of Missoula Valley, Michi is where local community meets urban styling and contemporary Japanese dining.

Pangea/Stave & Hoop

223 N. Higgins (406) 493-1190
mtpangea.com/staveandhoop.com

Pangea is an eatery with a globally inspired menu featuring tacos, curries, flatbreads & burgers, plus weekend brunch. Stave and Hoop is a new Missoula speakeasy serving cocktails, beer, wine, and Montana style comfort food.

Plonk

322 N. Higgins (406) 926-1791
plonkwine.com

Mingling excellent food, wine, and music together in a stunning venue with a beautiful atmosphere, inside and outside. Historic building with beautiful art.



SakeTome Sushi

137 W. Front (406) 926-2555
saketomesushi.com

A collaboration between chef Drake Doepke and the creatives of Missoula Valley. Enjoy fish, sushi rolls, appetizers, and cocktails in a comfortable and artistic atmosphere.

The Stables

227 W. Main (406) 540-4325
thestablesmissoula.com

The Stables is Missoula's newest wine bar and restaurant. The Stables offers over 100 wine options, a full bar, craft beer, and beautifully curated classic inspired menu.

Zoo Thai

150 E. Front (406) 540-4206
Zoothai.com

Authentic Thai food located in the Mercantile downtown.

Breweries & Wineries

Bayern Brewing

1507 Montana (406) 721-1482
bayernbrewery.com

Montana's first microbrewery started by German Brewmaster Juergen Knoeller more than 25 years ago. Award-winning lagers and seasonals plus the delicious Edelwiss Bistro.

Big Sky Brewing Company

5417 Trumpeter Way
(406) 549-2777 bigskybrew.com

Montana's largest microbrewery and one of the oldest featuring 15 different locally-made brews, including the infamous Moose Drool Brown Ale.

Dram Shop

229 E. Front (406) 540-4303
dramshopmt.com

Montana's first growler fill station, with over 30 taps of beer, wine, soda and cider inside the Historic Mercantile warehouse.

Draught Works Brewery

915 Toole Ave. (406) 541-1592
draughtworksbrewery.com

World-class, hand-crafted beers in the heart of the Westside Neighborhood since 2011.

GILD Brewing

515 S. Higgins (406) 926-3258
gildbrewing.com

Local brewpub with a basement arcade located on Missoula's coolest block. Open every day for drinks, serving dinner Wednesday-Saturday and brunch on Sundays.

Great Burn Brewing Co.

2230 McDonald Ave. (406) 317-1557
greatburnbrewing.com

Microbrewery and taproom on the south side of Missoula, featuring hand crafted ales on a small batch system, hop-centric and West Coast style beers, and 10 tap handles including six seasonal beers.

KettleHouse Brewing Co.

(406) 728-1660 kettlehouse.com

Locally-owned with a taproom and a production facility on the Clark Fork River in Bonner. A Montana focus and famous for Cold Smoke.

Distilleries

Montgomery Distillery

129 W. Front (406) 480-6355
montgomerydistillery.com

Missoula's first craft distillery offering a range of spirits made from the bounty of Western Montana's farms, fields, and mountains.

Coffee, Bistros & Cafes

Basecamp

201 E. Main (406) 510-1050
wrenmissoula.com/coffee-shop/

Basecamp is the on-site coffee shop at The Wren. Basecamp is where your Missoula adventure begins.

Bernice's Bakery

190 S. 3rd St. W. (406) 728-1358
bernicesbakerymt.com

Missoula's Best Bakery 15 years running. Cozy atmosphere, local stout coffee, made-from-scratch pastries, breads, desserts and lunch. Open daily 6 am-8 pm.

Black Coffee Roasting Co.

525 E. Spruce (406) 541-3700
blackcoffeeroastingco.com

Downtown Missoula's coffee roaster with a focus on small batches and cup quality since 2010.

Butterfly Herbs

232 N. Higgins (406) 728-8780
butterflyherbs.com

The essence of Missoula with Espresso Bar in the back and light lunches for all.

City Brew Coffee

121 W. Broadway (406) 721-3600
citybrew.com

Coffee without compromise. A Montana-based custom roaster with a comfortable atmosphere. Featuring fresh-baked pastries and an excellent line of teas.

Clyde Coffee

741 S. Higgins & 455 E. Main
(406) 540-4481 clydecoffee.com

Downtown's newest and one of few on the Hip Strip. Fast Wi-Fi, plenty of seating, open daily at 6 am.

Drum Coffee

1000 E. Broadway, 600 South Ave. W.
(406) 361-0111 drumcoffeemt.com

The roaster location is on East Broadway, and the original location is at South Ave W. Offering house-baked goods, light foods, and the best coffee in town.

Floreo Coffee Co.

101 E. Front (810) 869-5497
floreocoffee.com

Floreo Coffee is a sensorial micro roastery based in the Rocky Mountains of Montana.

Funk It Coffee & Thrift

314 N. 1st St. W. (406) 493-0714
funkitcoffeeandthrift.com

Funk It is a curated thrift and coffee shop located on the Northside in Missoula, MT. Funk It aims to welcome-in and repurpose the worn out.

Green Source Missoula

617 S. Higgins, 255 S. Russell,
inside VRTX (406) 239-5272
greensourcemissoula.com

Organic juice bar and café on the Hip Strip, featuring locally-sourced and other live foods.

Hunter Bay

812 Toole (406) 830-3388
Hunterbay.com

Serving locally-roasted coffee, plus tea, smoothies, breakfast and lunch.

Lake Missoula Tea Company

136 E. Broadway (406) 529-9477
lakemissoulatea.com

Missoula's exclusive tea bar in the Historic Masonic Temple. The best loose-leaf tea from around the world, plus wholesale and holiday gifts.

Liquid Planet

2922 Brooks St. (406) 317-1089
liquidplanet.com

A little "city" with big Missoula flair! An extensive beverage menu, plus sandwiches and pastries.

Market on Front

201 E. Front (406) 541-0246
marketonfront.com

Market on Front offers a variety of chef-inspired prepared foods, sandwiches, salads and soups, in which a majority of the ingredients are natural or organic and as many as possible are locally grown.

Pearl Boba Tea

420 N. Higgins, Ste. B (406) 240-2731

Boba Tea or "bubble" tea is sweet, flavorful and fun. Boba is a perfect treat to enjoy while hiking the "M", floating the Clark Fork, or hanging out on campus.

Ice Cream

Big Dipper

631 S. Higgins, 2700 Paxon, Ste. F
(406) 543-5722
bigdippericecream.com

Missoula's locally-made and favorite ice cream and sorbet. Recognized on Good Morning America, and voted "Missoula's Best" by Missoula Independent readers. Open daily.

Sweet Peaks Ice Cream

223 W. Front (406) 549-0028
sweetpeaksicecream.com

Montana-made ice cream and sorbet in classic, unique, and creative flavors, using local milk, cream, fruit, and more.

Caterers/Food Trucks/Vendors

AB Cooks—A Personal Chef Service

P.O. Box 7411 (406) 880-9695
missoulapersonalchef.net

An in-home cooking service that provides groceries and equipment to prepare up to five dinners in your home. Customized to your tastes, packaged in convenient portions, then frozen to be enjoyed at your convenience.

Back to the Mother Microbrewed Kombucha

(406) 616-3623
backtothemother.earth

Back to the Mother Microbrewed Kombucha is Missoula's locally crafted source for immune-boosting probiotics.

Bamboo Bar Catering

5415 US 93 (847) 650-5891
bamboomontana.com

Bamboo Bar is Montana's first turn key mobile tiki bar service.

Banh Missoula

(262) 995-7056

Bánh Missoula is a food stand that specializes in Vietnamese sandwiches (bánh mì), drinks, and deserts. Serving authentically Vietnamese food with a uniquely Missoula flair.

Big Dipper Mobile Ice Cream Cone Boy Truck

(406) 543-5722

bigdippericecream.com

Missoula's favorite ice cream and sorbet location in a mobile food truck so you never miss a chance to enjoy "Missoula's Best" ice cream.

Big Thai Country

(406) 240-9511 jumesthaicuisine.com

Missoula's first authentic Thai Food Truck, offering a variety of Thai food. Featuring Weekly specials and working events.

Bravo Catering

224 N. Higgins (406) 541-4900
Bravocatering.net

Will cater anything in and around town.

Clark Fork and Spoon Kitchen

(406) 670-5856
clarkforkandspoon.com

Menu features scratch made sauces and local meats, using the freshest ingredients.

Clove Cart Pizza Peddlers

(406) 274-4602 clovecart.com

A unique pizza cart with extraordinary and nourishing thin-crust pizza baked in a garlic-shaped brick oven.

El Cazador

2209 South Ave W. (406) 728-3657
elcazadormissoula.com

Authentic Mexican cuisine prepared by the Hernandez family. Food truck and catering available.

Gary's Local

235 E. Front Street (406) 763-1805
Garyslocal.com

Fresh, local food that everyone can afford! New locations at T&C Lounge and UM campus.

Indikai Mobile & Catering

(406) 546-1765
instagram.com/indikaimt/

Started by two local business owners that aim to serve high quality street food at pop-ups to catered affairs.

Isla's Lemonade

(406) 880-3094
Fresh-squeezed and homemade lemonade. Featured at Out to Lunch and Downtown ToNight.

Kamoon & Ragheef

(406) 493- 0249 ragheef-kamoon-restaurant.square.site
Arabic food trucks and restaurant in Missoula offering authentic flavors prepared with love.

L & M Eats

(406) 240-4963 lm-eats.com/
L&M Eats is a food truck/catering service with three separate concepts: Madeline's Mediterranean Grill, Yo Mamma's: A Taste of the South, and On The Fly: Food Service for Outfitters and Guides.

Lil' Orbits Doughnuts

(406) 546-5707
The freshest, tastiest mini donuts served hot at local area events.

Mountain Berry Bowls

(406) 407-1368
mountainberrybowls.com
A funky food truck serving all natural, gluten free, and dairy free smoothie bowls. Book them for parties, or find them around town or in Caras park to try one today.

M-80 Chicken

M80chicken.com
Missoula's favorite Nashville-style fried hot chicken sandwich food truck located in the parking lot of Kettlehouse brewhouse on Myrtle St.

Pattie Wagon

(406) 544-7660
Mobile food truck serving up affordable and hot burgers, pulled pork, fish & chips, and desserts at community events.

Puma Peruvian & Eclectic Cuisine

(406) 217-8837 pumamissoula.com
Puma Peruvian & Eclectic cuisine is a food-truck bringing rich culinary traditions from Peru to the Missoula community.

River City Eats

(406) 250-4594
rivercityeat@gmail.com
A mobile food facility catering savory sliders, fries, and fresh salads from regionally sourced ingredients to local community events.

Sa Wad Dee Food Truck

(406) 543-9966
facebook.com/profile.php?id=100057172131938
Outstanding spicy Thai food.

Thirst Tea Bubble Tea

(406) 531-5741 thirstteaboba.com
Mobile beverage truck serving a delicious selection of signature bubble teas and mochi.

Servin' Thyme

(406) 214-2424 mealthyme.net
Healthy and delicious food truck with original and classic menu options.

Zeera Pakistani Food Truck

(406) 529-9592

Missoula's first and only Pakistani food truck, serving authentic curries and street food style Pakistani meals.

Zooberry

(509) 387-3740

Zooberry is a local Missoula food truck that offers fresh acai and superfood bowls with multiple bases and toppings.



Shop

Downtown Missoula offers some of the best shopping in the Pacific Northwest with nearly 200 locally-owned destinations offering almost everything one could want, coupled with a welcoming and friendly Montana vibe.

Apparel & Shoes

Betty's Divine & Divine Trash

509 S. Higgins (406) 721-4777
bettysdivine.com

Fresh, contemporary, creative, and affordable clothing, footwear, and accessories in a unique atmosphere, plus Divine Trash vintage in the back.

Cloth & Crown

329 N. Higgins (406) 542-2626
clothandcrown.com

A carefully curated collection of women's clothing, handbags, scarves, candles, gorgeous lingerie, and jewelry in a variety of lines and prices.

Funk It Coffee & Thrift

314 N. 1st St. West (406) 493-0714
funkitcoffeeandthrift.com

Funk It is a curated thrift and coffee shop located on the Northside in Missoula, MT.



BRING MONTANA HOME.

MONTANA GIFT CORRAL

HEART OF MISSOULA • AIRPORT
INSIDE WALMART • DOWNTOWN BOZEMAN
GIFTCORRAL.COM • 406-388-7369

Hide & Sole

236 N. Higgins (406) 549-0666
hideandsole.com

Leather shoes and goods including belts, purses, wallets, briefcases, backpacks, and sheepskin footwear. Birkenstock, Dansko, Haflinger, Naot, and Blundstone brands.

La Belle Vita

135 N. Higgins (406) 721-2955
labellavita.com

La Belle Vita is the best women's fashion boutique in Missoula.

Lulu's Permanent Jewelry & Boutique

821 S. Higgins (406) 481-4778

First brick and mortar business in Missoula that does permanent jewelry, custom hats, clothing, décor, gifts and more!

Missoula Makers Collective

112 W. Front (406) 788-0587
mslamakers.com

The Missoula Makers Collective storefront is run by makers, to showcase Missoula's makers and their products.

The M Store

300 N. Higgins (406) 926-1249

Griz Nation Destination, featuring UM and Griz apparel and merchandise for all ages and sizes highlighting Nike gear and more. Open daily.

Modern Pastime

160 E. Front (406) 471-9392
modernpastime.com

Best place to find fun, unique and local gifts.

Montana Gift Corral

117 W. Front (406) 341-4957
giftcorral.com

New to Downtown Missoula, offering Montana-made and inspired gifts and more.

The Montana Scene

170 E. Front (406) 493-1588
themontanascene.com

With a mission to create fashionable and unique products that showcase a passion and admiration for Montana and it's adventurous atmosphere, The Montana Scene carries clothing, home decor, and gift items.

Mood Boutique

208 N. Higgins (406) 549-4000
moodboutiquemt.com

With devotion to quality and affordability, Mood offers unique and understated fashion from traditional to chic, novel to must-have brands.

My Montana Roots

225 N. Higgins (406) 926-3424
mymontanaroots.com

Clothing you can be proud of, if you're from or you like Montana. With a full apparel and accessories line for men, women and children and a robust online sales site, watch for Wear your Roots apparel in your state soon.

Olive + Iron

108 N. Higgins (406) 541-4766
oliveiron.com

A go-to destination for all men's and women's clothing needs. If you embrace tradition, create your own trends, or follow your own heart, we have what you are looking for in a wide range of prices.

One Eleven

111 N. Higgins (406) 541-7376
oneelevenboutiquemissoula.com

Fun, funky jewelry; unique and eclectic accessories and gifts. Featured in Elle Magazine's "where to shop" guide.

PaddleHeads Post

140 N. Higgins (406) 543-3300
paddleheadspost.com

All things Montana! Montana Gifts & Souvenirs. Griz Merch. PaddleHeads Gear & Tickets. Missoula Visitor Information Center!

REcreate Designs

P.O. Box 1314 (406) 214-9078

recreatedesigns.com

Specialty recycled and handmade clothing, repurposed items to create skirts, headbands, journals, tote bags, jewelry, maps, scraps and more.

Wholesale and Markets.

REVOLVR Menswear

301 N. Higgins (406) 830-5257

revolvrmen.com

Since 2013, REVOLVR Menswear has been Montana's go-to shop for men.

With everything from your favorite soft cotton tee, a sport jacket for a night out, to rare and unique raw denim.

Runner's Edge

304 N. Higgins (406) 728-9297

runnersedgemt.com

Missoula's nationally recognized running specialty store for racers, joggers, walkers and more, ensuring the right shoes for all. Great selection and knowledgeable staff.

Soul City Dry Goods

127 N. Higgins (406) 728-7400

soulcitymt.com

Gift shop offering an array of Missoula/Montana-themed apparel, toys and other merchandise.

Pine & Needle Print Co.

939 Stephens (406) 549-2632

stitchesmontana.com

We are your one stop shop for all of your promotional and apparel needs. We offer fast and friendly service and strive to make you look good!

Zootown Hype & Vintage

111 W. Alder (406) 531-6018

shop.zootownhypevintage.com

Offering a wide selection of hype streetwear and curated vintage clothing.



olive+iron
Men's and Women's Fashion & Accessories

SHOP 7 DAYS A WEEK
M-F 10-6
Sat 10-5
Sun 11-4



@oliveandiron

108 N Higgins Missoula, MT 59802 (406) 541-4766

Art

4 Ravens Gallery

248 N. Higgins (406) 317-1543
4ravensgallery.com

An artist-run gallery specializing in fine contemporary craft, featuring local and regional artists exploring glass, stone, metal, wood, jewelry, fiber, photography and clay.

Art Attic Framing & Design

123 South Ave. W. (406) 728-5500
artatticmt.com

A well-established custom framing gallery locally owned and operated since 1968, offering conservation framing, art and frame restoration, professional installation, and commercial and residential framing.

Artists' Shop

127 N. Higgins (406) 543-6393
Missoulaartistsshop.com

Missoula's premiere artist owned cooperative gallery, featuring local and regional fine craft and art: ceramics, jewelry, wood, glass, calligraphy, painting, prints, cards, local shirts, photography, textiles and more.

Dana Gallery

246 N. Higgins (406) 721-3154
montana.com/danagallery

Featuring original paintings, photographs, sculptures, and textiles, plus photographic workshops and tours.

Frame of Mind

1706 Brooks St. (406) 549-8589
frameofmindmt.com

Full-service framing shop and gallery featuring the work of Monte Dolack & MaryBeth Percival. Open Tue.-Sat. and Mon. by appointment.

Radius Gallery

120 N. Higgins (406) 541-7070
radiusgallery.com

Showcasing contemporary fine art by regional artists.

Xplorer Maps

1245 S. 3rd St. West (406) 546-2659
xplorermaps.com

It is through the beautifully illustrated story maps that Xplorer Maps hopes to provide people with unique memories of wherever their journeys have taken them (and/or where they hope to go).

Books/Music

Ear Candy Music

624 S. Higgins (406) 542-5029
earcandymusic.biz

We offer a huge, diverse selection of high-quality music, and exceptional customer service, small town-style, with your satisfaction our highest priority.

Fact & Fiction

220 N. Higgins (406) 721-2881
factandfictionbooks.com

Featuring experienced booksellers with an eclectic knowledge of titles and authors and fabulous literary events year-round.

Shakespeare & Company

103 S. 3rd. St. W. (406) 549-9010
shakespeareandco.com

A feast for the book lover with a staggering selection of new and used books from around the world.

Slant Street Records

1413 S. Higgins (406) 317-1825
slantstreetrecords.com

Lovingly curated specialty record shop constantly sourcing classic, rare, and hard-to-find Vinyl LPs & 45s.

Children & Babies

Hazel and Fawn

612 S. Higgins (406) 317-1074
hazelandfawn.com

Providing families with babies the best baby products and equipment for all of life's family adventures, including hiking, biking and more.

Imagination Station

227 N. Higgins (406) 926-3325

Missoula's premiere toy store, offering classic toys and games, blocks, science kits, erector sets, tea sets, puppets, arts and crafts, puzzles, and more.

Dispensary

Collective Elevation

211 W. Broadway (406) 600-1412
collectiveelevation.com

State of the art facilities and a passionate team creating Montana's best sustainable organic living soil cannabis!

MariMint

501 S. Higgins (406) 839-6908
marmintmt.com

MariMint is a cannabis dispensary specializing in nitrogen sealed flower.

Sinful Beverages

426 N. Higgins (406) 830-0784
sinfulbrands.com

Sinful Beverages is the most popular, highest selling and most available cannabis infused beverage in Montana.

Zen Medicine

210 S. 3rd St. West (406) 396-4134
zenmedicinemt.com

Zen Medicine is a Family-Owned Dispensary located in the Heart of Missoula. We take great Pride in the Products we create and being a part of the dispensary culture!

Floral

Bitterroot Flower Shop

811 S. Higgins (406) 542-0309
bitterrootflowershop.com

Full-service flower shop featuring a wide array of fresh flowers, plants, silks and gifts with full-time wedding consultant on staff.

Leaf + Quiet

235 N. 1st St. W. Ste. F
(406) 218-6080

Carrying a wide range of houseplants, as well as planters, plant hangers, books, and other plant-related goods.

Pink Grizzly

1400 Wyoming (406) 728-3370
montanawreaths.com

Offering quality products and family-style service including affordable plants, flowers, Christmas trees, and wreaths.

Food & Beverage

Back to the Mother

Microbrewed Kombucha

12120 Hwy. 10 E (406) 616-3623
backtothemother.earth

Missoula's locally crafted source for immune-boosting probiotics. Proudly sourcing our ingredients as local, organic, and fair-trade as we can get them!

Butterfly Herbs

232 N. Higgins (406) 728-8780
butterflyherbs.com

The essence of Missoula. Wide selections of coffees, teas, spices, botanicals, and toiletries. Montana-made and imported gifts. Espresso Bar nestled in the back.

Double K Ranch Deli

2700 Paxson (406) 493-0306
doublekranchmt.com/deli

The Double K Ranch Deli was created with the goal of sourcing a meat shop and restaurant with only local meat.

Grizzly Liquor

110 W. Spruce (406) 549-7723
grizzlyliquor.com

Missoula's libation station, offering local and world-wide distilled spirits, wines of all kinds, and gifts for those who imbibe.

Lake Missoula Tea Company

136 E. Broadway (406) 529-9477

lakemissoulatecompany.com

Tea products from around the world and the supplies for brewing and serving great tea at home.

Market on Front

201 E. Front (406) 541-0246

marketonfront.com

Market on Front offers a variety of chef-inspired prepared foods, sandwiches, salads and soups. Most ingredients are natural or organic and as many are locally grown.

Missoula Wine Merchants

311 N. Higgins (406) 926-1911

missoulawine.com

Specialty wine shop with an extensive selection of wine, beer, cheese, charcuterie and gifts with focus on small producers and harder-to-find wines.

Tosca Olive Oils

137 E. Main (307) 640-0315

toscaoliveoils.com

Tosca Fine Olive Oils and Balsamics is a startup business located in Missoula, Montana, that specializes in selling high-quality olive oil and balsamic vinegar.

Gifts & Home Decor

Import Market

201 W. Broadway (406) 728-2175

theimportmarket.com

Offering great prices on furniture, home decor, jewelry, gift items and so much more. Come check out Missoula's best-kept secret.

Jeannette Rankin

Peace Center

519 S. Higgins (406) 543-3955

jrpc.org

Unique fair-trade gift shop on the Hip Strip, supporting the non-profit organization dedicated to promoting peace locally and globally.

Lewisiah Home

312 N. Higgins (406) 274-7485

lewisiahhome.com

Scandinavian inspired modern furniture and furnishings. Gifts for the home.

Montana Decor

135 E. Main (406) 550-2762

montanadecor.com

A shop specializing in Mountain Modern furnishings and home décor. We have taken special care to procure furnishings, art, rugs, bedding and home décor for that 'Made for Mountain Living' feel.

Mori Furniture Design

500 E. Spruce, Ste. A (303) 587-6312

morifurnituredesign.com

Crafting one of a kind furniture, cabinetry, and Murphy Beds for the Missoula community.

Noteworthy Paper & Press

219 S. 3rd W. (406) 541-6683

noteworthystore.com

Missoula's letterpress boutique and gift shop, specializing in stationery, custom invitations, holiday cards, thermography, engraving, letterpress printing, custom illustration, calligraphy, and more.

Rockin' Rudy's

237 Blaine (406) 542-0077

rockinrudys.com

Missoula's most fun shopping experience, offering music, jewelry, clothing, scarves, posters, cards, toys, skin care products, and more. Open daily.

Home Renovation

Home ReSource

1515 Wyoming (406) 541-8300

homeresource.org

The ultimate recycle, repurpose, reuse building center, full of reusable building materials with the end goal of building a more sustainable community.

Little Dumps

(406) 274-2205

littledumps.com/missoula

Little Dumps Missoula offers friendly deliveries of dirt, soil, mulch, compost, decomposed granite, gravel, rock, & sand products.

Missoula ReStore

3655 Highway 200 E.

(406) 549-8215

Habitatmsla.org/restore

Accepting and reselling donated home and business building materials and supplies and using those donations to build family homes in Missoula.

Montana Ace Hardware-Eastgate

905 E. Broadway (406) 721-9690

montanaace.com

Downtown Missoula's hardware store with home and garden supplies, paint, tools and more. Open daily.

Jewelry

Bathing Beauties Beads

812 Toole Ave. (406) 543-0018

bathingbeautiesbeads.com

Incredibly creative bead store, offering over 7,500 types of beads, strands, tools and supplies from vintage to semi-precious, local and around the globe.



Outdoor Markets

Clark Fork River Market

Caras Park (406) 880-9648

clarkforkrivermarket.com

Lively and scenic outdoor setting for buying local fruits and vegetables, meats, poultry, fish, organic dairy products, plants and more. Saturdays May-Oct. on the Clark Fork River.

Missoula People's Market

W. Pine St., P.O. Box 696

missoulasaturdaymarket.org

Open-air arts and crafts street market features gifts from local artists and craftsmen, plus import items and food vendors. Saturday mornings May-Sept.

Outdoor Gear

Board of Missoula

618 S. Higgins (406) 721-7774

bomskate.com

Missoula's original skateboard and snowboard shop with clothing and shoes for all, plus a tune-up shop and an indoor mini ramp.

Missoula Bicycle Works

708 S. Higgins (406) 721-6525

missoulabicycleworks.com

Full-service bike shop emphasizing quality customer service and major brands: Kona, Cannondale, Bianchi, Orbea and Seven. Rentals and great information as well.

The Trail Head

221 E. Front (406) 543-6966

trailheadmontana.net

Downtown's outdoor recreation destination. Clothing, equipment, fly fishing shop, boat and ski rentals, and much more. Open daily and open late.

Specialty Items

All American Trophy

1251 Burlington Ave (406) 549-5691
allamericantrophy.net

Customize trophies, plaques, ribbons, medals—you name it!

The Confident Stitch

139 W. Front (406) 540-4068
theconfidentstitch.com

The Confident Stitch is a gathering spot for anyone who delights in the fine details, and major triumphs, of handcrafted fabric treasures.

The Crystal Limit

833 S. Higgins (406) 549-1729
crystallimit.com

Family-owned shop featuring the best in crystals, fossils, beads, handmade jewelry, and amazing treasures from around the world.

The Dark Room

109 W. Main, Downstairs
(406) 549-1070
darkroomofmontana.com

Photo processing and professional consulting.

The Good Food Store

1600 S. 3rd St. West (406) 541-3663
goodfoodstore.com

The Good Food Store has been Missoula's market for locally-produced, organic, and bulk foods for more than 45 years. Additional departments include Health and Beauty, Meat and Seafood, Beer and Wine, and NEST, the Good Food Store's housewares store (located inside the Good Food Store).

Montana Antique Mall

331 W. Railroad St. (406) 721-5366
montanaantiquemall.com

The Montana Antique Mall is in a very historical building and home to countless antiques and collectibles. With over 15,000 sq. feet and four floors of kickknacks to explore!

Office City

115 W. Broadway (406) 543-7171
missoulasofficecity.com

Missoula's longest standing store, offering a large selection of office equipment, stationary, cards pens, supplies, and furniture since 1916.

Out of the Box Cigars

629 Woody St. (406) 840-4406

Out of the Box is a premier cigar brick and mortar store. Located next to the Fool's End Club, Montana's first private lounge.

Piece of Mind

123 W. Main (406) 830-3206
pieceofmind.net

Tobacco accessories and glass art.

Specticca Optical Boutique

319 N. Higgins (406) 549-5700
specticca.com

Exclusive eyeglass frames and sun-wear with prescriptions filled by certified opticians. Free shipping.

Toiffer Pet Outfitter

422 N. Higgins (406) 540-4334
toiffer.com

Offering a curated selection of the best products for cats and dogs. Hand-selected, researched, and often hard-to-find, our products are gentle on our planet, ethically sourced, and beautifully crafted.

Worden's Market & Deli

451 N. Higgins (406) 549-1293
wordens.com

Craft beer, worldly wines. Loads of fun, interesting, specialty beverages, candies, chocolates, cheeses, meats and knowledgeable, friendly staff all at our Historic Downtown location.

Stay



Missoula is the kind of place that makes you want to linger, so staying an extra day or two or five is a great idea! You'll have much more time to explore and enjoy Downtown!

Camping

Jim & Mary's RV Park

9800 Highway 93 N. (406) 549-4416
jimandmarys.com

Locally-owned RV Park with full hookups, pull-through sites set in beautiful evergreen trees. Power, laundry, showers, visitor services, and family-friendly service included. Open year-round.

Hotels

AC Hotel Missoula Downtown

175 N. Pattee (406) 549-0119
marriott.com/en-us/hotels/msoac-ac-hotel-missoula-downtown

Experience a restful stay at the AC Hotel Missoula Downtown. Experience our guest rooms with work stations, modern decor, and complimentary Wifi. Enjoy the convenience of our 24-hour fitness centre and dining at AC Kitchen, AC Lounge, and our seasonal rooftop bar. We are located in close proximity to a variety of attractions and local restaurants.

Broadway Inn & Conference Center

1609 W. Broadway (406) 532-3300
broadwayinnmissoula.com

Centrally located and quiet, this full-service hotel features 79 rooms, complimentary breakfast, fitness center, heated pool and hot tub, plus The Still Room Bar & Grill.

City Center Motel

338 E. Broadway (406)-543-3193
missoulacitycenter.com

Newly-renovated hotel across the river from UM with complimentary breakfast, fitness center, meeting rooms, and next door to Missoula College.

Comfort Inn University

1021 E. Broadway (406) 549-7600
missoulacomfort.com

Newly-renovated hotel across the river from UM with complimentary breakfast, fitness center, meeting rooms, and next to Missoula College.

DoubleTree by Hilton Missoula-Edgewater

100 Madison (406) 728-3100
doubletree.com

A full-service hotel across the Clark Fork River from the University of Montana with ample conference space and fine dining at the FINN Restaurant.

Holiday Inn Missoula Downtown

200 S. Pattee (406) 721-8550
himissoula.com

Newly renovated, full-service hotel with 200 guest rooms located on the Clark Fork River east of Caras Park. Featuring 8,000 sq. ft. of banquet and meeting space, an indoor pool and recreation area.

LOGE Missoula

420 W. Broadway (406) 481-1800
logecamps.com/property/missoula-mt

LOGE Missoula is right in the heart of downtown, an ideal basecamp for adventuring in every direction and exploring the right spots in town.

Riverside RELAXATION



Relax at Missoula's only river-front hotel, The DoubleTree Missoula Edgewater. Nestled along the scenic Clark Fork River, where a leisurely float will take you to all the action of downtown Missoula, yet far enough to keep your nights peaceful and serene.

Enjoy riverfront dining at FINN, host an intimate meeting or special event in our private dining room or stop by before a Griz game for burgers and a beer in our lounge.

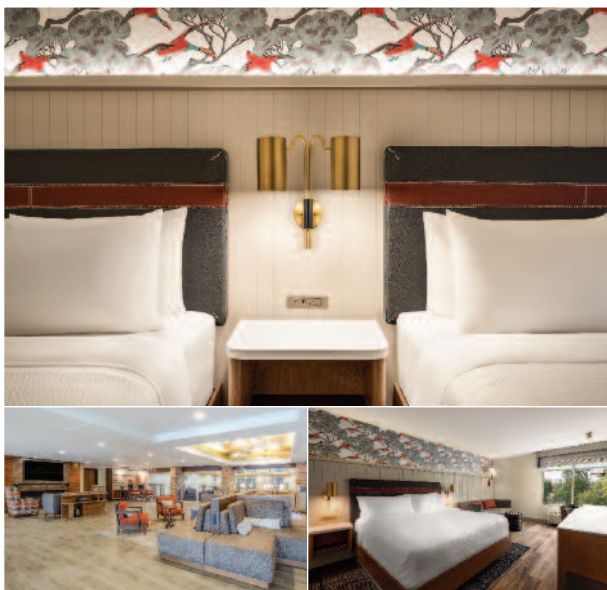
100 Madison / 406.728.3100
MissoulaEdgeWater.DoubleTree.com
Dining 406.542.4660
FinnMissoula.com


DOUBLETREE
by Hilton®
MISSOULA-EDGEWATER



MISSOULA DOWNTOWN

Stay in the Heart of Downtown!



Missoula's Largest Full-Service Hotel

Newly renovated premium guest rooms, 20,000 sf of flexible meeting space, lobby bar, market & espresso bar, breakfast buffet for purchase, pet-friendly, gracious park-like setting along the Clark Fork River.

Complimentary Features Include:

On-site guest parking (a rarity in the heart of downtown), indoor pool, fitness center, business center, wi-fi, airport & area-wide transportation.

200 S. Pattee Street • **(406) 721-8550**
holidayinn.com/missouladwtn

Residence Inn by Marriott

125 N. Pattee (406) 542-6252
marriott.com/hotels/travel/msori-residence-inn-missoula

A new extended-stay hotel located in the historic Missoula Mercantile with suites featuring separate living & sleeping areas, fully equipped kitchens, complimentary breakfast, fitness center and rooftop courtyard.

Staybridge Suites

120 Expressway (406) 830-3900
staymissoula.com

Extended stay hotel near North Reserve with spacious suites, fully-equipped kitchens, complimentary breakfast, and mid-week business receptions with appetizers and beverages.

The Wren

201 E. Main (406) 401-4400
wrenmissoula.com

Located in the heart of Downtown Missoula, The Wren Hotel offers 73 one-of-a-kind guestrooms designed with the Missoula traveler in mind. Each room tells an authentic Montana story about the adventures you can uncover right out our front door.

Vacation Rentals

Hip Strip Apartments at the Penwell Building

107 S. 3rd St. W. (406) 370-9400

Vacation rentals in the Historic Penwell Building built in 1910.

Mariposa Cottage

438 E. Broadway (406) 550-2511
vrbo.com/1381649

Heart of Downtown retreat in a fully renovated 1930s cottage suite that sleeps one to four people.



Play

Missoula is a vibrant hub of activity and adventure for people of all ages. It boasts an impressive array of entertainment, cultural events, music, art, and family-friendly activities. Year-round, Missoula offers endless opportunities for outdoor recreation, making it a true playground for both adults and children.

Community Centers

Missoula Public Library

455 E. Main (406) 721-2665
missoulapubliclibrary.org

Missoula Public Library provides programs, materials, and services to meet the informational, cultural, recreational and educational needs of the community.

Zootown Arts Community Center (ZACC)

216 W. Main (406) 549-7555
zootownarts.org

Community art center offering accessible life-enriching experiences through classes for youth and adults, gallery shows, music, art, camps, and more.

Children & Family Activities

A Carousel for Missoula & Dragon's Hollow

101 Carousel Drive (406) 549-8382
carouselformissoula.com

The second fastest Carousel in the country with locally hand carved horses, gift shop, an accessible outdoor playground, and so much fun!

Currents Aquatic Center

600 Cregg Ln. (406) 721-PARK
ci.missoula.mt.us/165/Currents-Aquatic-Center

Indoor water park in McCormick Park featuring a children's water playground, fitness pool, two water slides, and a sparking spa.



ONE FREE RIDE
*with this coupon only
One coupon per person per day
Expires 12/31/2026.
No Cash Value.

Learn more at www.carouselformissoula.com
406.549.8382 | mslacarouse@gmail.com

Located in Caras Park Downtown Missoula
Usually open 11am to 5:30pm, Sept-May and 11am to 7pm June-Aug

Families First Learning Lab

455 E. Main (406) 721-7690

familiesfirstmt.org

Families First Learning Lab works to strengthen families through education, connection, play, and partnership.

Garden City Ballet

P.O. Box 3555 (406) 240-6042

gardencityballet.org

A community-focused ballet company committed to inspiring Missoula dancers and sharing quality performances with Western Montana.

Glacier Ice Rink

1101 South Ave. West (406) 728-0316

glaciericerink.com

Missoula's premiere ice arena with two sheets. Home to Missoula youth hockey, Bruins semi-professional hockey, ice skating and curling for children and adults. Located at the Missoula County Fairgrounds.

Mismo Gymnastics

2430 Benton (406) 360-4778

mismogymnastics.com

A fun, loving environment where challenge is embraced and joy comes from learning through gymnastics and cheer, including open gym time and toddler play groups.

Missoula Butterfly House & Insectarium

1075 South Ave W. (406) 214-5036

missoulabutterflyhouse.org

Learn about butterflies, millipedes, arthropods, and more with experiences for children of all ages.

SpectrUM Discovery Science Museum

455 E. Main (406) 728-7836

umt.edu/spectrum

Missoula's public science museum with focus on fun science education, as well as summer camps, after school programming, birthday parties.

Splash Montana

3001 Bancroft (406) 542-WAVE

ci.missoula.mt.us/169/Splash-

Montana

Open June - August, features three exciting three-story waterslides, kiddie Grizzly slide, lazy river with a wild river branch, floating play structures, Olympic sized pool, Crazy Creek Café, and Fireline Grill.

Entertainment

Westside Theater & Bare Bait Dance

1200 Shakespeare, Ste. 2

(406) 493-0123

thewestsidetheater.com

Artist-run nonprofit theater and studio space committed to developing and presenting live performance with a focus on movement and aerial arts.

MCT, Inc. – Center for the Performing Arts

200 N. Adams (406) 728-1911

mctinc.org

World-famous Missoula Children's Theatre and the Missoula Community Theatre focused on building creativity, social skills, and self-esteem through touring and home theater productions.

Missoula Paddleheads Professional Baseball

700 Cregg Ln. (406) 543-3300

gopaddleheads.com

Affordable Family Fun Entertainment!

Missoula Symphony Association

200 N. Higgins (406) 721-3194

missoulasympphony.org

Missoula's Symphony Orchestra and Chorale, featuring high-quality musicians, 10 live performances annually, and music education and outreach throughout the year.

The Roxy Theater

718 S. Higgins (406) 728-9380

theroxytheater.org

Missoula's little Hip Strip theater features new and old releases of independent, foreign and classic films, theater, and community events.

Festivals

Big Sky Documentary Film Festival

Late February Downtown

(406) 541-3456 bigskyfilmfest.org

One of Missoula's wintertime assets each February, hundreds of non-fiction films are annually adjudicated and showcased during a week-long festival for all.

Missoula on Main

(formerly First Night)

New Year's Eve (406) 541-0860

missoulaonmain.org

Missoula's New Year's Eve Celebration of the arts with a masquerade party and several venues Downtown.

International Choral Festival

312 E. Pine (406) 721-7985

choralfestival.org

Promoting artistic excellence, global understanding, friendship, and goodwill through choral music every three years. Enjoy world-class choirs, social activities, and sightseeing.

International Wildlife Film Festival

Late April Downtown (406) 728-9380

wildlifefilms.org

More than 40 years of showcasing wildlife, habitat, people, and nature. WildWalk Parade, WildFest, and a full week of films at the Roxy Theater.

Montana Brewers' Festival

Fall in Caras Park

montanabrewers.com

Celebrating the vast growth of the craft brew industry in Montana with an annual statewide brewfest and gathering of creative entrepreneurs giving rise to the trade.

River City Roots Festival

Late August at Main & Ryman

(406) 543-4238

rivercityrootsfestival.com

Missoula's Signature Celebration, Roots Fest is a two-day, admission-free music and art festival for the entire family. Hosted by the Missoula Downtown Association.

Sunday Streets

Dates Vary

missoulainmotion.com/SSM

Missoula's open streets initiative promoting active transportation, community health, public space, and local business. Hosted by Missoula in Motion.

Museums & History Centers

Boone and Crockett Club & Visitors Gallery

250 Station (406) 542-1888

boone-crockett.org

With a focus on conservation, ethics, and big game hunting, folks can see extraordinary animals at the visitor center inside the Historic Milwaukee Station.

Historical Museum at Fort Missoula

Building 322 at Fort Missoula

(406) 728-3476

fortmissoulamuseum.org

Missoula's history lives here in 13 historic structures and multiple exhibits that tell of the story of trade, imprisonment, forestry, and fire.

Missoula Art Museum

335 N. Pattee (406) 728-0447

missoulaartmuseum.org

Missoula's flagship and admission-free art institution, featuring a brand new outdoor Art Park and eight galleries showcasing diverse and engaging contemporary local and international artists.

Montana Museum of Art & Culture

University of Montana (406) 243-2019

umt.edu/montanamuseum

Home to one of the oldest and most prominent collections in the Rocky Mountain West, the state museum of fine art connects Montana to the world.

Montana Natural History Center

120 Hickory (406) 327-0405

Montananaturalist.org

Showcasing Montana's natural environments, and educating teachers and children about the natural history of the Northern Rockies.

National Museum of Forest Service History

6305 Highway 10 West

(406) 541-6374

forestservicemuseum.org

Missoula's newest museum dedicated to the history, education and collection of the USDA Forest Service. Located one mile west of the Missoula Airport.

National Wildlife Federation

970 Wyoming (406) 541-6730

nwf.org/Northern-Rockies-and-Pacific-Region.aspx

The National Wildlife Federation's mission is to inspire Americans to protect wildlife for our children's future.

Miscellaneous

Clark Fork Yacht Club

509 S. Higgins, Ste. 3366

(406) 546-4555

clarkforkyachtclub.com

No tubes? No wheels? No problem. Clark Fork Yacht Club is Missoula's new way to float the river. The Yacht Club provides everything you need to float the river, minus the hassle and with flamingo pink tubes.

The Clay Studio

1106 Hawthorne (406) 543-0509

theclaystudioofmissoula.org

Classes for all ages and skill levels, studio rentals, exhibitions, and pottery and sculpture for sale.

Missoula Fairgrounds Events Center

1101 South Ave. W. (406) 721-3247

missoulafairgrounds.com

Missoula County's 48 acre campus in the heart of Midtown, featuring multiple and historical buildings, Montana's premier hockey rinks, and the Western Montana Fair each August.

River City Brews

39 Juniper Lane (406) 813-0595

rivercitybrews.com

Delicious beer or cider, local food, good company, beautiful scenery, and the most unique raft in Western Montana.

Zoo Town Surfers

5077 Old Highway 10 West

(406) 640-4602 zootownsurfers.com

Enjoy whitewater rafting near Missoula, MT with an unforgettable trip. Zoo Town Surfers is your gateway to exhilarating whitewater rafting tours in the stunning landscapes of Missoula, Montana and just over the border in Idaho.

Businesses & Services

Downtown Missoula has a wealth of businesses and non-profit organizations that provide a wide variety of services to the Missoula community and beyond. Whatever you need, Downtown is sure to have it!

Accounting

Boyle, Deveny & Meyer

305 S. 4th E., Ste. 200
(406) 721-3555
bdmcpa.com

JCCS

321 W. Broadway, 4th Floor
(406) 549-4148
jccscpa.com

Wipfli, LLP

101 E. Front, Ste. 301
(406) 728-1800
wipfli.com

Architecture & Planning

A&E Design

222 N. Higgins (406) 721-5643
ae.design.com

Cushing Terrell

306 W. Railroad, Ste. 104
(406) 728-9522
ctagroup.com

Domestic Habitat

207 E. Main St. (406) 855-3702
domestichabitat.com

Gavin-Hanks

Architectural Studio
1605 Stephens (406) 543-1477
gavin-hanks.com

Kent Watson

225 Black Pine Tr. (406) 721-3500

LOCi Architecture + Design

416 E. Broadway (406) 493-0224
loci-arch.com

MMW Architects

125 W. Alder (406) 543-5800
mmwarchitects.com

OZ Architects

531 N. Higgins Ave (406) 728-3013
oza.com

Paradigm 3 Architecture

125 ½ W. Main (406) 549-6120
paradigmv3.com

ATM/Credit Card Processing

American ATM

(406) 529-9377
missoulamobileatm.com

ATM of Montana

(406) 721-4377

Automotive

AAA Mountain West

1200 S. Reserve, Ste. B
(406) 829-5509 aaa.com

Midas Auto Service

332 S. Orange (406) 728-7760
midas.com

Noon's Gas Station

& Convenience Store
540 E. Broadway (406) 721-5968
noons.com

Roemer's Point S Tire & Auto

240 E. Broadway (406) 549-6425
www.tirefactory.com/roemers

Town & Country Auto Body

3615 Clark Fork Way (406) 541-4855
tcmissoula.com

Banking

Bank of Montana

125 Bank St. (406) 829-2662
bankofmontana.com

Clearwater Credit Union

3600 Brooks St. (406) 523-3312
Clearwatercreditunion.org

Farmers State Bank

3130 N. Reserve (406) 829-5000
farmersbank.com

First Interstate Bank

101 E. Front (406) 523-4304
firstinterstatebank.com

First Montana Bank

201 N. Higgins (406) 829-2666
firstmontanabank.com

First Security Bank

150 W. Broadway & 541 E. Broadway
(406) 728-3300 fsbmsla.com

Horizon Credit Union

2330 S. Reserve St.
(406) 728-1790 hzcu.org

Opportunity Bank of Montana

200 N. Higgins (406) 542-1500
opportunitybank.com

Park Side Credit Union

320 W. Broadway (406) 728-4475
parksidefcu.com

Stockman Bank of Montana

321 W. Broadway (406) 258-1400
stockmanbank.com

TrailWest Bank

218 E. Main, Ste. A (406) 541-4246
familyofbanks.com

U.S. Bank

1635 S. Russell St. (406) 523-2404
usbank.com

Beauty & Health

Blaque Owl Tattoo

307 N. Higgins (406) 543-0688
blaqueowltattoo.com

Cedar Creek Salon & Day Spa

110 Caras Drive (406) 543-0200
cedarcreekspa.com

Compass Barbershop

736 S. Higgins (406) 926-1778
compassbarber.com

Dharma Wellness

415 N. Higgins Ave. (406) 384-6955
dharmawellnesspa.com

Drybar Missoula

140 E. Front St. (406) 303-2976
drybarshops.com

Float Missoula

521 South Higgins (406) 493-0502
floatmsla.com

Gem Aesthetics and Wellness

410 W. Spruce (406) 640-3802
gemaestheticsmissoula.com

Honey Sugaring and Facials

308 W. Pine, Ste. B01 (406) 241-7001
honeysugaring.com

Love Life Tattoo

315 N. Pattee, Ste. B1 (701) 220-7807
lovelifetattoomissoula.com

Meadowsweet Herbs

180 S. 3rd W. (406) 728-0543
meadowsweet-herbs.com

PEAK Health & Wellness

150 E. Spruce &
5000 Blue Mountain Rd.
(406) 521-3344 peakmissoula.com

Renegade Chiropractic

515 S. Reserve St. (406) 546-4688
renegadechiropractic.com

Sacred Ally

130 E. Broadway (406) 830-8082
sacredally.love

Sagrada Acupuncture

1805 Bancroft (805) 400-9095
sagradaacupuncture.com

Skin Chic

130 E. Front (406) 541-8466
skinchic.com

VRTX Fitness

255 S. Russell (406) 541-3114
vrtxfitness.com

Beverage Distributors

Culligan Water

2020 Ernest (405) 721-1991
mtculligan.com

Missoula Bottling Co.:

Pepsi-Cola

339 International Dr. (406) 543-8281

Summit Beverage

3299 Flynn Ln. (406) 541-3900
summitbeverage.com

Zip Beverage

1301 Scott (406) 728-9543
zipbeverage.com

Business Consulting Services

Badenoch Consulting

336 S. 5th E. (406) 728-7321

Big Sky Public Relations

202 W. Spruce (406) 261-7665
Bigskypublicrelations.com

Brock Development

(406) 370-8816

Cascadia Business Development

269 W. Front (406) 239-3547
cascadiabusiness.com

Cognizant

910 Wyoming (406) 205-4899
cognizant.com

CDA

1330 W. Broadway (406) 926-3313
cdainteriors.com

Historical Research Associates

125 Bank St., 5th Floor
(406) 721-1958 hrassoc.com

Holly Truitt Consulting

(406) 829-8898
hollytruittconsulting.com

J. Vader Consulting

2120 S. Reserve, Ste. 1074
(406) 272-6163
jvaderconsulting.com

McArthur Consulting

3406 W. Central (406) 370-4653

Missoula.org

(406) 830-4842 missoula.org

MoFi

229 E. Main (844) 728-9234
mofi.org

Montana Maven

(406) 860-2925
montanamaven.com

Q Hospitality Management

(425) 654- 5555

Six Pony Hitch

2010 River Road (406) 880-8655
sixponyhitch.com

City of Missoula

Mayor's Office

435 Ryman (406) 552-6001
ci.missoula.mt.us/mayor

Missoula Public Health

301 W. Alder (406) 258-4775
missoulacounty.us

Missoula County

200 W. Broadway (406) 258-4877
missoulacounty.us

Missoula In Motion & Missoula Bicycle/ Pedestrian Office

435 Ryman (406) 552-6675
missoulainmotion.com

Missoula Parking Commission

128 W. Main (406) 552-6250
ci.missoula.mt.us

Missoula Parks & Recreation

600 Cregg Ln. (406) 552-6254
missoulaparks.org

Missoula Redevelopment Agency

140 W. Pine (406) 552-6160
ci.missoula.mt.us

Computers & Connectivity

Access Montana

300 Main, Ronan, MT
(406) 676-2500
accessmontana.com

Blackfoot

1221 N. Russell (406) 541-5000
blackfoot.com

First Call Computer Solutions

500 N. Higgins (406) 721-4592
firstsolution.com

Morrison-Mairle Systems

1055 Mount (406) 542-4855

Submittable

101 E. Front, Ste. 500
(855) 467-8264
submittable.com

TDS Telecoms

9912 Garrymore Lane (406) 281-1207
tdsfiber.com

WaterColor Computer Training

327 E. Broadway (406) 542-1573
watercolorct.com

Contractors

Dick Anderson Construction

7168 Expressway (406) 721-8912
daconstruction.com

Jackson Contractor Group

P.O. Box 967 (406) 542-9150
jacksoncontractorgroup.com

Liberty Electric Inc

9660 Summit Dr. (406) 721-4177
libertyelectricinc.com

MK Electric, LLC

(406) 370-9091

Poteet Construction

3460 Grant Creek Rd.
(406) 728-9370
poteetconstruction.com

Scariano Construction

2016 Strand (406) 728-7549
scarianoconstruction.com

Thrive Custom Painting

(406) 207-7830

Custom Apparel & Products

All American Trophy

1251 Burlington (406) 549-5691
allamericantrophy.net

Exact Image

1942 Birch (406) 549-3575
exactimagemt.com

Fabricon

1021 Ronan St. (406) 728-8300
fabricon.com

FastSigns of Missoula

2825 Stockyard Rd. #F5
(406) 510-2218 fastsigns.com

Pine & Needle Print Co.

939 Stephens (406) 549-2632
stitchesmontana.com

The Shirt Shop

740 River St. (406) 728-5671
shirtshop.biz

Education & Training

Head Start

1001 Worden (406) 728-5460
childstartinc.net

Missoula County Public Schools

909 South Ave. W. (406) 728-2400
mcpsmt.org

Employment & Labor

Lynda Brown

HR Management Consulting
10025 O'Brien Cr. (406) 360-4869

Missoula Job Service

539 S. 3rd St. W. (406) 728-7060
employmissoula.com

Engineering

DCI Engineers

131 W. Main (406) 721-7315
dci-engineers.com/bceweb

DJ&A, PC

2000 Maple St. djanda.com

Eclipse Engineering, Inc.

113 W. Main, Ste. B (406) 721-5733
eclipse-engineering.com

HDR Engineering, Inc

700 SW Higgins, Ste. 200
(406) 532-2200 hdrinc.com

IMEG

1817 South Ave. W., Ste. A
(406) 721-0142
imegcorp.com/location/missoula/

Morrison-Maierle

1055 Mount Ave. (406) 542-8880
m-m.net

Sanbell

127 N. Higgins, Ste. 306
(406) 869-3337 sanbell.com

WGM Group

1111 E. Broadway St. (406) 728-4611
wgmggroup.com

Event Support Services

Black Knight Security & Investigations

P.O. Box 1056 (406) 493-0806

Eastgate Rental & Party Center

500 E. Spruce (406) 549-5114
eastgaterental.com

Weddings By Sara

(406) 260-0665 weddingsbysara.com

Fulcrum Security

(406) 207-2263 fulcrumsecurity.us

Marketplace Events

725 W. Alder (406) 544-9252
marketplacemt.com

North Star Security

(406) 290-3750
northstarsecuritymt.com

Sweet Pea Sewer & Septic

9424 Futurity Dr. (406) 728-3533
sweetpeamt.com

Financial: Investment Planning Services

Charles Schwab Missoula

741 S Higgins, Ste. B (406) 214-3355
schwab.com/missoula

Edward Jones- Matthew Noreus

400 W. Broadway, Ste. 103
(406) 542-4799 edwardjones.com

D.A. Davidson

283 W. Front, Ste. 101
(406) 543-8244 dadco.com

Glacier Wealth Management

(406) 327-0112
glacierwealthmanagement.com

Merrill Lynch

330 N. Higgins (406) 829-2440
ml.com

Rowe & Associates, Inc

530 N. Orange (406) 721-5888
roweandassociatesmt.com

S.G. Long Financial

283 W. Front, Ste. 302
(406) 721-0999 sglong.com

Willow Creek Capital Management

432 W. Spruce, Ste. 102
(406) 830-3286
raymondjames.com/willowcreekcm

Healthcare

Auberge at Missoula Valley

3620 American Way (406) 542-7009
frontiermgmt.com

Ascend Sports Medicine

603 Woody (406) 770-2432
ascendsportsmedicine.com

Axis Physical Therapy

301 E. Broadway (406) 542-3333
axispt.org

Blue Mountain Clinic

610 N. California (406) 721-1646
bluemountainclinic.org

Craig Ravesloot, PhD

101 E. Broadway (406) 926-2500

Lambert Family Chiropractic

1290 S. 3rd W. (406) 541-9355
lambertfc.com

Montana RX Compounding

111 N. Higgins (406) 542-2888
montanacompoundingrx.com

Partners Hope Foundation

3615 Union Pacific St. (406) 532-3200
partnershopefoundation.org

Petersen Concierge Medical

2315 McDonald Ave., Ste. 110
(406) 541-7040
petersenconciergemedical.com

Planned Parenthood of Montana

219 E. Main (406) 728-5490 ext. 31
plannedparenthood.org/montana

Sentinel Health

6995 Linda Vista Blvd., Ste. 120
(406) 926-1300 sentinelhealthmt.com

Hospitals

Community Medical Center

2827 Fort Missoula Rd.
(406) 327-4152 communitymed.org

Providence MT Health Foundation

502 W. Spruce (406) 327-3047
foundation.providence.org

Providence St. Patrick Hospital

500 W. Broadway (406) 543-7271
providence.org

Housing

Clark Fork Riverside/Manor

301 W. Front (406) 721-2439

Insurance

AAA Mountain West

1200 S. Reserve, Ste. B
(406) 829-5509
mountainwest.aaa.com

ATTIC: American Trucking & Transportation Insurance Co.

228 W. Main (406) 523-3889
atticrrg.com

Ashmore Insurance Agency

111 N. Higgins, Ste. 410
(406) 541-1004 ashmoreins.com

Farm Bureau Financial Services

2813 Connelly Way (406) 728-6811
agentwilljohnson.com

Hale Insurance Agency

415 N. Higgins, Ste. 103
(406) 721-1311
farmersagent.com/chale

Marsh McLennan

2925 Palmer, Ste. B (406) 728-2910
marshmclennan.com

Legal Services

Boone Karlberg, PC

201 W. Main, Ste. 300
(406) 543-6646 boonekarlberg.com

Browning, Kaleczyc, Berry & Hoven, PC

201 W. Railroad, Ste. 300
(406) 443-6820 bkbh.com

Carey Law Firm

P.O. Box 8234 (406) 728-0011
carey-law.com

Cederberg Law Offices

2625 Dearborn (406) 721-2100

Clark Fork Law Offices

202 W. Spruce St. (406) 728-0168

Crowley Fleck, PLLP

305 S. 4th St. E. (406) 523-3600
crowleyfleck.com

**Datsopoulos, MacDonald
& Lind, PC**

201 W. Main, Ste. 201
(406) 728-0810 dmllaw.com

Dorsey & Whitney, LLP

125 Bank St., Ste. 600
(406) 721-6025 dorsey.com

**Garlington, Lohn &
Robinson, PLLP**

350 Ryman (406) 523-2500
garlington.com

Hall Booth Smith

101 E. Front, Ste. 402 (406) 317-0070
hallboothsmith.com

Morgan Law Offices

210 E. Pine (406) 830-3875
mtbankruptcylawyers.com

Parsons Behle & Latimer

127 E. Main, Ste. 301
(406) 317-7220 parsonsbehle.com

Rasmusson Law Offices, PLLC

218 E. Front, Ste. 200
(406) 549-3323 rasmussonlaw.com

**Rhoades, Siefert
& Erickson, PLLC**

430 N. Ryman, 2nd Floor
(406) 721-9700 montanalawyer.com

Tranel Law Firm

401 Washington (406) 926-2662
tranelfirm.com

Williams Law Firm, PC

235 E. Pine (406) 721-4350
wmsslaw.com

Worden Thane, PC

321 W. Broadway, Ste. 300
(406) 721-3400 wthlaw.net

Marketing & Graphics

Art & Image Design

P.O. Box 8092 (406) 218-8545
artandimage.biz

Blue Dogs Media

216 W. Main (406) 531-4455
bluedogsmedia.com

Catalyst Content Marketing

806 W. Spruce (406) 885-6690
catalystmt.com

Bonfire Brands

730 Defoe (406) 282-4752
bonfire-brands.com

Big Sky Public Relations

(406) 261-7665
bigskypublicrelations.com

Digital Marketing Missoula

1923 E. Broadway (406) 880-8996
digitalmarketingmissoula.com

Gecko Designs

523 N. Higgins (406) 662-1123
geckodesigns.com

High Mountain Creative

(248) 921-7328
highmountaincreative.com

Marketplace Media & Events

225 W. Front marketplacemt.com

**METTLE Strategic
Marketing Solutions**

2813 Connery Way, Ste. 200
(406) 529-7796
mettle.wpengines.com

Missoula Social Media

(406) 529-5488
missoulasocialmedia.net

**Montana Craft Beer
Connection**

(541) 602-3274
montanacraftbeerconnection.com

MontanaBahn Marketing

1200 South Reserve (406) 721-0785
mtbahn.com

ORNJ Media

(208) 691-1656 ornj.media

Pathlabs

111 N. Higgins, Ste. 500
(406) 552-1022 pathlabs.com

Pintler Group

700 South Ave. W.
(585) 705-1304 pintlergroup.com

Prospect Drive LLC

(406) 529-3846 andycommons.com

Six Pony Hitch

2010 River Rd. (406) 880-6855
sixponyhitch.com

**UM Student Survival Kit
Coupon Book - Giesa
Communications**

(425) 898-8853 thesurvivalkit.com

Vita Nova Marketing Group

425 North 5th St. W., Ste. 207 & 209
(406) 529-6688
vitanovamarketing.com

Windfall

516 S. Orange, 210 E. Main St.
(406) 829-8200 windfallstudio.com

Media**ABC FOX Montana**

2200 Stephens (406) 542-8900
ktmf.com

Kiln Media

(406) 241-0458 kilnmediahub.com

Gatherboard/HB Enterprises

P.O. Box 7481 (406) 880-0880
missoulaevents.net

Missoula Broadcasting Co.

2620 Radio Way (406) 721-6800
trail1033.com

**Missoula Community
Access Television**

455 E. Main, inside Library
(406) 542-6228 mcat.org

Missoula Current

missoulacurrent.com

Missouliau

P.O. Box 8029 (406) 523-5200
missouliau.com

Montana Public Radio

32 Campus Dr. mtpr.org



Everyone is Invited at
www.MissoulaEvents.net

Missoula's ORIGINAL SOCIAL NETWORK
Your Community Events!

 **#SO**
MIS ULA
#SoMissoula missoulaevents.net

Non-Profit: Arts & Culture

Arts Missoula

P. O. Box 7662 (406) 541-0860
artsmissoula.org

Missoula Symphony Association

200 N. Higgins (406) 721-3194
missoulasympphony.org

The Clay Studio of Missoula

1106 Hawthorne St. (406) 543-0509
theclaystudioofmissoula.org

Montana International Choral Festival

312 E. Pine (406) 936-0393
choralfestival.org

Non-Profit: Community Development

Accelerate MT

1121 E. Broadway (406) 243-6982
acceleratemt.com

Better Business Bureau

P.O. Box 17343 (406) 215-2262
bbb.org/eastern-washington

Boy Scouts of America, Montana Council

1243 Burlington Ave. (406) 926-1810
montanabsa.org

Missoula Building Industry Association

1840 South Ave. W. (406) 543-4423
buildmissoula.com

Missoula Chamber of Commerce

825 E. Front (406) 543-6623
missoulachamber.com

Missoula Community Foundation

508 E. Broadway (406) 926-2846
Missoulacommunityfoundation.org

Missoula Economic Partnership

500 N. Higgins, Ste. 300
(406) 541-6461
missoulapartnership.com

Missoula Midtown Association

missoulamidtown.com

Missoula Organization of REALTORS

724 Burlington (406) 728-0560
missoularealestate.com

MOFI

229 E. Main (406) 728-9234
mtcdc.org

Front Step Community Land Trust

1500 Burns St. (406) 829-0873
frontstepclt.org

Non-Profit: Environment

Clark Fork Coalition

140 S. 4th St. W. (406) 542-0539
clarkfork.org

Ecology Project International

315 S. 4th E. (406) 721-8784
ecologyproject.org

Five Valleys Land Trust

120 Hickory, Ste. A (406) 549-0755
fvlt.org

Garden City Harvest

1657 River Rd. (406) 523-3663
gardencityharvest.org

Missoula Urban Demonstration Project (MUD)

1527 Wyoming (406) 721-7513
mudproject.org

National Wildlife Federation

970 Wyoming St., Ste. 302
(406) 541-6730 nwf.org

Watershed Education Network

802 E. Front (406) 541-9287
montanawatershed.org

Non-Profit: Health & Human Services

Boys & Girls Club of Missoula County

1515 Fairview, Ste. 243
(406) 532-1597 bgcmissoula.org

Cancer Support Community

2625 Briggs St. (406) 272-5709
cancersupportmontana.org

CASA of Missoula, Inc

1018 Burlington, Ste. 201
(406) 542-1208 casamissoula.org

Eating Disorder Center of Montana

1221 South Higgins (406) 451-7370
edcmt.com

Empower MT

2300 Regent, Ste. 101
(406) 541-6891 empowermt.org

Headwaters Foundation

119 W. Main (406) 926-6526
headwatersmt.org

Human Resource Council

1801 S. Higgins (406) 728-3710
hrcxi.org

Missoula Aging Services

337 Stephens (406) 728-7682
missoulaagingservices.org

Missoula Family YMCA

3000 S. Russell (406) 721-9622
ymcamissoula.org

Missoula Food Bank

1720 Wyoming (406) 549-0543
missoulafoodbank.org

Missoula Senior Center

705 S. Higgins (406) 543-7154
themissoulaseniorcenter.org

Montana Down Syndrome Association

PO Box 16717 mtdsa.org

Montana Food Bank Network

5625 Expressway (406) 721-3825
mfbn.com

Opportunity Resources, Inc.

2821 S. Russell (406) 721-2930
opportunityresources.org

Poverello Center

1110 W. Broadway (406) 728-1809
thepoverellocenter.org

Providence Montana Health Foundation

502 W. Spruce (406) 329-5640
supportpmhf.org

Run Wild Missoula

304 N. Higgins, Alley (406) 544-3150
runwildmissoula.org

Soft Landing Missoula

939 Stephens, Ste. C (406) 493-0504
softlandingmissoula.org

Summit Independent Living

700 SW Higgins, Ste. 101
(406) 728-1630 summitilc.org

United Way of Missoula County

412 W. Alder (406) 549-6104
missoulaunitedway.com

Western Montana Mental Health Center

1321 Wyoming (406) 532-9900
recoverycentermissoula.org

YWCA of Missoula

1130 W. Broadway (406) 543-6691
ywcaofmissoula.org

Non-Profit: Housing

Habitat for Humanity of Missoula

3655 Highway 200 E.
(406) 549-8210 habitatmsla.org

HomeWORD

1535 Liberty Ln., Ste. 116A
(406) 532-4663 homeword.org

Missoula Housing Authority

1235 34th St. (406) 549-4113
missoulahousing.org

Mountain Home Montana

2606 South Ave. W. (406) 360-4317
mountainhomemt.org

Non-Profit: Tourism

Adventure Cycling Association

150 E. Pine (406) 721-1776
adventurecycling.org

Destination Missoula: Convention & Visitors Bureau

140 N. Higgins, Ste. 202
(406) 532-3250
destinationmissoula.org

Glacier Country Regional Tourism Commission

4852 Kendrick Place, Ste. 101
(406) 532-3234 glaciermt.com

Non-Profit: Miscellaneous

City Club Missoula

P.O. Box 9071 (406) 541-2489
cityclubmissoula.org

Humane Society of Western Montana

5930 Highway 93 S. (406) 549-3934
missoulahumanesociety.org

Mavericks/Missoula Athletic Council, Inc.

(406) 721-6471 missoulamavs.com

Montana Brewers Association

P.O. Box 763, Helena, MT
(406) 439-8075 montanabrewers.org

Missoula Mavericks Legion Baseball

P.O. Box 7622 (406) 544-4433
missoulamavericks.net

VFW Post 209 "Ole Beck"

245 W. Main (406) 381-8544
vfwpost209.org

Photography

Athena Photography

415 N. Higgins (406) 531-8833
athenaphotography.com

Printing & Copying

Advanced Litho Printing

913 SW Higgins, Ste. 103
(406) 541-2576
advancedlithoprinting.com

Alphagraphics

1947 South Ave. W. (406) 728-4810
alphagraphicsmissoula.com

Kelley Create

5650 W. Harrier (406) 549-2527
kelleyconnect.com

Minuteman Press

2100 South Ave. (406) 241-5826
missoula-mt.minutemanpress.com

Missoula Copy Center

2304 McDonald Ave. (406) 549-2679
missoulacopy.com

Real Estate: Development

Coldwell Banker Commercial Drew Warne Advisory Group

121 Hickory St. (406) 544-4055
cbcdrewwarne.com

Farran Realty Partners

(406) 541-9000 thefarrangroup.com

Main Street Enterprises

218 E. Front (406) 728-8858

University Avenue Developers

300 University Ave. (312) 403-4033

Real Estate: Misc.

Stevens & Company

116 W. Spruce (406) 721-5454

Pattee Street, LLC

125 Bank St., Ste. 500
(406) 360-9817

River Front Place

PO Box 8599 (406) 728-7333

ROAM Student Living

301 E. Front (406) 258-7460
liveatroam.com

Real Estate: Mortgage

Fidelity National Title

320 W. Broadway (406) 728-1500
fnf.com

PrimeLending

265 W. Front (406) 577-7115
lo.primelending.com

Synergy One Lending

704 W. Sussex (406) 542-0700
s1l.com/branch/missoula

Real Estate: Realtors

Berkshire Hathaway HomeServices Montana Properties

1020 South Ave. W. (406) 329-2007
BHHHSMT.com

Clark Fork Realty

512 E. Broadway (406) 728-2621
clarkforkrealty.com

Mary Donnelly, Realtor

314 N. Higgins (406) 396-9152
bhhsmt.com

Engel & Volkers Western Frontier

321 N. Higgins (406) 926-3322
westernfrontier.evrealstate.com

ERA Lambros

3011 American Way (406) 532-9200
eralambros.com

Glacier Sotheby's International Realty

321 N. Higgins (406) 541-7020
glaciersir.com

Ink Realty Group

148 South Ave. W. (406) 728-8270
inkmt.com

Vickie & Chris Honzel: Lambros Real Estate ERA

3011 American Way (406) 531-2605
findmissoulahomes.com

Matt Mellott: Sterling CRE

2829 Great Northern Loop
(406) 203-3950
sterlingcreadvisors.com

McLean Properties

323 N. Higgins (406) 546-5509
mcleanpropertiesmt.com

Mindy Palmer, Berkshire Hathaway HomeServices

1020 South Ave. W. (406) 329-2055
mindypalmer.com

Missoula City Homes- Sheila Mischke

621 Brooks (406) 214-4046
sheilamischke.kw.com

NAI Crowley Moore

111 N. Higgins, Ste. 400
(406) 721-1111
naicrowleymoore.com

Portico Real Estate

315 S. 4th St. E., Ste. 205
(406) 327-8787
porticorealestate.com

PureWest Christie's International Real Estate

101 Railroad (406) 541-4000
purwestrealestate.com

Recycling & Waste Management

Missoula Compost Collection

2305 South Hills (406) 370-5876
missoulacompostcollectionllc.com

Republic Services of Montana

P.O. Box 8449 (406) 543-3157
republicservices.com

Tear It Up, LLC

915 Kern St. (406) 240-7043
tearitup.biz

Sound & Audio Services

Sound Creations

(406) 544-6624
soundcreationsmt.com

The Recording Center

118 W. Pine (406) 721-4172
therecordingcenter.com

Special Event Venues

Missoula Fairgrounds Events Center

1101 South Ave. W. (406) 721-3247
missoulafairgrounds.com

Pavilion at Caras Park

123 Carousel Dr. (406) 543-4238
missouladowntown.com

Transportation Services

ASUM Office of Transportation

32 Campus Dr, UC #105
(406) 243-2045
umt.edu/transportation

Missoula International Airport

5225 W. Broadway (406) 728-4381
flymissoula.com

Mountain Line

1221 Shakespeare (406) 543-8386
mountainline.com

University of Montana

Alumni Association

115 Brantly Hall
(406) 243-5211 grizalum.org

College of Arts & Media

715 Connell Ave. (406) 243-5868
umt.edu/arts-media

College of Business

32 Campus Drive
umt.edu/business

Experiential Learning & Career Success

Davidson 002 (406) 243-4615
umt.edu/internships

Grizzly Scholarship Association

Adams Center, Ste. 139
(406) 243-6481 gogriz.com

Information Technology Dept.

32 Campus Drive (406) 243-4357
umt.edu

Missoula College

1205 E. Broadway (406) 243-7811
mc.umt.edu

Office of the President

University Hall, Ste. 109
(406) 243-2317 umt.edu

Miscellaneous

Big Sky Commerce

2809 Connery Way (406) 327-0611
bigskycommerce.com

Bike & Type

415 N. Higgins (406) 203-4467
bikeandtype.com

Fish Window Cleaning

1500 W. Broadway, Ste. E
(406) 728-5201
fishwindowcleaning.com

Hellgate Elks Lodge #383

112 N. Pattee (406) 549-0542
elks.org



Missoula Textile Services

111 E. Spruce (406) 543-5171
missoulatextiles.com

NorthWestern Energy

1801 S. Russell (888) 467-2669
northwesternenergy.com

The Sidecar

225 W. Front (406) 282-1036
thesidecar.club

Two Men and A Truck

1620 Rodgers, Ste. 2
(406) 251-9818
twomenandatruck.com/movers/mt/missoula

Worship

First United Methodist Church Missoula

300 E. Main (406) 549-6118
firstumcmissoula.org

Missoula Interfaith Collaborative

2205 34th Street (406) 207-8228
micmt.org



*\$25 from each
'406' license plate
supports Downtown
projects and
programs*

*Learn more about the Missoula Downtown Foundation at
missouladowntown.com/mdf*

Tours



See map page 55

Downtown Public Art

Public art is an essential part of any vibrant urban landscape, reflecting the spirit and identity of a community. Explore more than 20 unique public art installations that bring creativity and character to our downtown streets

1. Peace Works

Peace Works was created by area high school students Peter Bradstock, Sarah Jackson, Amanda Keeland, Brittany Kirkland, Sarah Logan, Yuki Sugimoto, and Tara Westle with artist Amie Thurber in the summer of 2000. A mural celebrating diversity with a colorful, festive atmosphere, Peace Works is located at the rear entrance of the Jeannette Rankin Peace Center at 519 S. Higgins.

2. Myrtle Mural

Commissioned by neighboring businesses, this wheat paste mural by local artist Amber Flaherty graces the historic Penwell Building in the heart of the downtown area known as the "Hip Strip".

3. Dreaming Missoula

The Dreaming Missoula sculpture is in the Clark Fork Natural Park on the south side of the Clark Fork River near the Orange Street bridge. The sculpture was created in 1994 by Lynne Hull and Kioko Mwitki, a native of Kenya. Hull sculpted the wood elements, and Mwitki fabricated the metal components.

4. Returnings

The Returnings sculpture (pictured right) is on the East Side of the Higgins Avenue Bridge just north of the Clark Fork River. Created by Jeffrey Funk in 1989 as a project of the City of Missoula Public Art Committee, these three large bronze fish twist among boulders and are a favorite among children.

5. Untitled

The untitled mural in Bess Reed Park on the south end of Clay Street is behind the Holiday Inn Missoula Downtown along the Clark Fork River. Painted by Big Brothers Big Sisters in 1997, this mural features volunteers and children.

6. Cattin' Around

The Cattin' Around sculpture adorns Central Park parking garage in the 100 block of West Main Street. Mike Hollern created this whimsical, ferrous cement depiction of a sprawled alley cat in 1991 as a project of the City of Missoula Public Arts Committee. More recently, the sculpture has been mentioned nationally as a must see for cat lovers. A small puddle of water collects on the cats back to create a birdbath.



7. Studebaker

The Studebaker on the side of the Studebaker Building at 216 West Main Street was created by noted local artist Stan Hughes in 2000. The work pays tribute to the historical background of the Studebaker Building and the heart of the Gasoline Alley historic area, which evolved on West Main Street in the early 1900s and was a project of the City of Missoula Public Arts Committee.

8. Uptown Tiles

The Uptown Apartments, located at 329 Woody Street, has 500 colorful 6-inch ceramic tiles mounted on seven large concrete planters made by hundreds of people at a First Night Missoula celebration.

9. E.S. Paxson Murals

The E.S. Paxson Murals are located inside the Missoula County Courthouse at 200 West Broadway. Created sometime between 1912 and 1914, these historical scenes were painted on canvas with oils.

10. Veterans Memorial

The Veterans Memorial honors veterans of WWI and WWII. Located on the Missoula County Courthouse lawn on the corner of Broadway and Ryman, this cast bronze sculpture of a WWI soldier was created by J. Pauling in 1921. A 1927 plaque lists WWI veterans and a 1948 plaque lists WWII veterans..

11. The Heart of Missoula Murals

The Heart of Missoula murals are located at 111 West Broadway, at the corner of Broadway and Higgins Avenues. These murals are the result of a unique public/private collaboration between the Missoula Public Art Committee, the Missoula Redevelopment Agency, and Rick Bice. Artist Hadley Ferguson created seven large panels depicting the University of Montana and Downtown Missoula. The other five panels showcase various buildings and streets as they existed in the early 1900s and feature the Star Garage, the Kohn Clock, early newspaper publishing, Missoula railroads, and the Garden City Brewery.

12. Missoula Art Park

Completed in the spring of 2017, the Missoula Art Park is Downtown Missoula's new artistic offering. With a new outdoor gathering place complete with tables, chairs, benches, trees and plants, the Art Park offers a place for folks to linger and an outdoor restroom for the public's use. The Missoula Art Museum curates rotating art shows in the outdoor space, improving the quality of life for all.

13. Ponder

Located indoors at 140 West Pine, Ponder was designed by Mary Iverson to honor and inspire those who participate in the legislative process. As City Council and community members walk down the long corridor toward the Council Chambers, they are inspired to go through a process of clearing their minds of concerns for their personal lives, and enter the non-partisan, objective mind set required for public service.

14. Walter Hook Series

The Walter Hook Series is located inside the Chambers in City Hall at 435 Ryman Street. Painted in 1984-1985 by Missoula artist Walter Hook, the series of seven oils was purchased with the Bill Cregg Memorial Fund and was a project of the City of Missoula Public Art Committee.

15. Mountain Line Transfer Center Mural

The mural is located in the Mountain Line Transfer Center between the Missoula County Courthouse and City Hall. The mural features 200 tiles decorated with deer, eagles, bears, trout, bitterroots, roses, and other symbols that represent the natural heritage of Montana. The mural was created in April of 2000 by Missoula County Public School students with the help of their art instructors Katherine Lynch, Jackie Alford, Carla Getz and Susanne Woyciechowicz, with local artist Dana Boussard.

16. Proper Shoppers

Installed at the Mountain Line Transfer Center in 2002, the Proper Shoppers solid bronze sculpture was created by Missoula artist Tom Rippon, a ceramics professor at UM, and is a project of the City of Missoula Public Art Committee. The stylized grandmother and her favorite grandchild watch as dozens of buses and hundreds of pedestrians scurry about.

17. Virgin Mary

The Virgin Mary sculpture is set in a river cobble grotto in the side garden of St. Francis Xavier Church at 420 W. Pine Street. Sculpture and creation date unknown.

18. Wall of 100 Hearts

Located at The Heart Institute at Providence St. Patrick Hospital, these heartfelt mosaics were made by the sixth grade classes of Washington Middle School in 2002. As inspiration for the patients, each heart was created by an individual student. Teachers Joni McNeil and Mary Gillhouse coordinated with the art direction from Jayne Piazza.

19. First Night Tile Project

The First Night Tile Project is on the Northside/Westside Pedestrian Bridge near the Grand and First Street intersection. Created by children and adults who participated in the First Night Missoula public tile project on New Year's Eve 1999, these tiles were installed in April 2000. The theme features animals of all types.

20. Crossings

The Crossings sculpture is located in front of the Northern Pacific Railroad Depot at the north end of Higgins Avenue. Consisting of four large red X's made of enamel on metal with concrete wing walls and a platform set on a stone ballast, it represents railroad themes. "Crossings" is a project of the City of Missoula Public Art Committee. Created by Taag Peterson in 1986, the XXXX's relate to the tall trestles necessary for crossing mountain ravine.

21. John Mullan

The John Mullan marble sculpture is located in the plaza at the end of North Higgins Avenue in front of the Northern Pacific Railroad Depot. Created in 1914 and one of just six sculptures remaining, this structure was erected to mark the route of the wagon road, surveyed and built by John Mullan, from Fort Benton to Fort Walla Walla on the Columbia River.

22. Brennan's Wave

This Caras Park sculpture, viewing platform and whitewater feature in the Clark Fork River are named after world-class Missoula kayaker Brennan Guth, who died in Chile in 2001 pursuing his sport and passion.

23. A Carousel for Missoula

"If you will give it a home, and promise no one will ever take it apart, I will build A Carousel for Missoula." That was the promise Missoula cabinet-maker Chuck Kaparich made to the Missoula City Council in 1991. By opening day, May 27, 1995, over 100,000 hours of volunteer time had gone into the construction of 38 permanent ponies, three replacement ponies, two chariots, 14 gargoyles, gargoyle frames and mirror frames, and the largest band organ in continuous use in the United States, all within a jewel box building. You can find it at 101 Carousel Drive.

24. Dragon Hollow

Dragon Hollow is a magical playground adjacent to A Carousel for Missoula. The playland was the combined effort of artists and consultants from Leathers & Associates, Inc. Dragon Hollow was built by 6,000 volunteers in just nine days.

25. Mountain Waters Currents Aquatic Center

The City of Missoula Public Art Committee commissioned Missoula artist James Todd to create a design to be sandblasted by Nash, Inc. on the exterior of the Currents Aquatic Center. Todd's Mountain Waters design features motifs of Northwestern wildlife amidst cascading waters.

26. Go with the Flow

This sculpture, which stands 20 feet tall at its highest point, is located at the Park Place Parking Structure, and tells the story of changing water, an element that designer Mike Golins speaks deeply to people in Missoula. "We fish on rivers, tube them, even", he said, "learn life lessons from their currents." Golins' design is a rolling wave that pours into a crashing one that flows into an eddy, and the entire structure points from Downtown Missoula to the Clark Fork River.

27. Roaring Through Time

This mural located on the Bank Street Staircase is a colorful snapshot of the area's ancient history with the upper crust layer as Glacial Lake Missoula. The mural was designed and painted by the Flagship Missoula Program with 96 kids and 20 adults in 2019 thanks to the Missoula Parking Commission and the City of Missoula Public Art Committee.



University of Montana

For more information about public artwork on the **University of Montana campus**, a map of public art is available on the Montana Museum of Art and Culture website: www.umt.edu/montanamuseum/document/campusartwalk.pdf. Over 50 works of art are available for public enjoyment.



Other Downtown Public Art

The Dorothy Dragon

Spanning over 115 feet in length, 28 feet in height, and three walls the Dorothy Dragon came to life in the summer of 2024 by artist Lillian Nelson. The dragon meanders through 19 windows on the West face and breathes fire up a chimney that has historically kept residents warm inside the Dorothy apartment building for the past century.

Free Flow

Located at the Downtown Missoula Partnership office at 218 E Main Street, the space received a vibrant facelift in July 2024. In just one scorching week, artist Kelsey Dzintars brought Free Flow to life, a stunning mural that captures the natural beauty of Missoula and its surrounding rivers and valleys.

Greetings From Missoula

Completed in 10 weeks during the summer of 2023 by Tanya Lee Yarrow, this mural depicts many of the activities Missoulians know and love. It captures the essence and representation of the city and has become a focal point for locals and tourists alike to enjoy.

Filling the Void

Two murals on adjacent alley walls along the 100 block of West Broadway were created in the summer of 2023 through the Missoula Art Museum's Teen Art Project. The murals are a juxtaposition of indoor to outdoor scenes and include ceramic elements throughout the piece.

Decorative Traffic Signal Boxes

Located at various intersections in Downtown and throughout Missoula.

Tours

See map page 55

Historic Walking Tour

History leaves its mark in ways that can't be erased, and nowhere is that more evident than in Downtown Missoula. As you explore the city's rich past, take a moment to look up—hidden remnants of history reveal themselves in unexpected places. From faded billboards of bygone establishments to architectural details that whisper stories of the past, each step uncovers another layer of Downtown Missoula's ever-evolving narrative.

1. Wilma Building 131 S. Higgins

Previously known as the Smead-Simons Building, this eight-story Sullivan-esque-style building was commonly referred to as the Showplace of Montana. Constructed in 1921, the Wilma was Missoula's first modern steel-frame high-rise building. It was built by William Billy Simons, an early western entrepreneur, who produced Wild West shows and built several theaters in Oregon, Idaho, and Alaska during the Gold Rush. The theater became a living memorial to his wife, Edna Wilma, a famous light opera star. The historic interior of the Wilma building was remodeled in 2015 with state of the art sound and lighting systems, and restoring much of the original décor making it one of the top music venues of its size in the U.S.

2. Florence Building 111 N. Higgins

Completed in 1941, the Florence Building occupies the same site as two earlier Florence Hotels, both of which burned down. Much like the east section of the Palace Hotel (Broadway & Ryman), this hotel was built to accommodate rising numbers of people traveling by car, the Florence included a multi-level parking garage within the new building. Today this excellent example of Art Moderne architecture has largely been converted into office and retail space in the 1970s and 80s, original features from the hotel like the Governor's Room and the recently restored Lobby are still available for special events today.



3. Headquarters Building/ Daily Annex 113-119 W. Front

Originally constructed as a saloon and social club in 1888, the Headquarters building was advertised as “an ornament to the street”. In 1892 the building witnessed a major fire and the murder of Maurice Higgins, son of a Missoula founder. The old saloon was later purchased by J.R Daily to use as retail office space for his meat company. Finished in 1917, the annex was used as Daily’s production plant for much of the next 50 years. Over the decades, the original ornate façade was hidden away under a series of remodels until finally being uncovered during restoration work in the 1990s. Recognized with local and state historic preservation awards, the complex is home to a display of artifacts and project progress on its second floor

4. Gleim II Building 255 & 257 W. Front

The Gleim II was a brothel owned and operated by Mary Gleim, whose splashy career included a conviction for attempted murder of a rival and a prison term in Deer Lodge. Built around 1893, after two major fires swept the Downtown, this red brick building was restored in 1995 and captured a Historic Preservation Award for that effort. This building was one of eight owned by Gleim during the peak years of Missoula’s Red Light District. “Mother Gleim” owned this two-story vernacular commercial-style brick building until her death in 1914.

5. Gleim Building 265 W. Front

This classically styled brick building served as the headquarters for Mary Gleim’s bordello businesses along Front Street from the early 1890s to 1914. Original arches were uncovered in a 1980’s renovation. Listed in the National Register of Historic Places, this building is an excellent example of Romanesque Revival architecture with its arched windows, brick pilasters, checkerboard banding, and granite sills. Through its lifetime, businesses located here included the Pullman Pool Hall (1929), Carroll Nash Cigars (1932), and the Hawthorne Club, a 1940s jazz club.

6. Studebaker Building 216 W. Main

As the automobile gained popularity in the 1910s, stables and garages existed side by side. The succession of businesses at this address documents the transition that must have been hard on the old timers. By 1921, the Main Street Motor Company advertised repairs and rental space for 70 vehicles here. Louis Nybo sold Studebakers, the choice of the Missoula police force until the 1950s.



7. Palace Hotel 147 W. Broadway

First opened as the Savoy Hotel in 1909, this building is one of the few remaining symbols of the prosperous period of time when the expansion of the railroad through Missoula enhanced the growth of the lumber and manufacturing industries. The original structure and a 1941 annex formed Missoula's largest single hotel. As time passed, the hotel's upper floors became an empty, decaying shell, but a 1995 rehabilitation project created 60 upper-floor housing units. Today the Palace Apartments beautifully illustrate how preservation can rejuvenate a city center.

8. Missoula County Courthouse 200 W. Broadway

The neo-classical style sandstone Courthouse (pictured below left) was designed by prominent local architect, A.J. Gibson, and completed in 1910. Features of the building include the impressive clock tower which houses a two-ton bell, massive Ionic support columns, copper-faced entry doors, and vertical panels of beveled glass. Eight murals created by well-known western artist, Edgar S. Paxson, hang in the building's entryway and document the valley's early history.

9. Simons Block 314 N. Higgins

Built in 1899, the Simons Building was added to the National Register of Historic Places in 2000, recognizing its historical significance in Downtown Missoula. Named after Missoula businessman Louis N. Simons, the building was originally an art store that evolved into a general hardware store in the 1920s. It was also home to one of the city's last bordellos. The second floor was vacant for close to 30 years before renovations.

10. Higgins Block 202 N. Higgins

The Higgins Block, commissioned by Missoula co-founder C.P. Higgins in 1889, is Missoula's finest example of Queen Anne commercial architecture. Higgins was one of Missoula County's original county commissioners and a member of Montana's first Territorial Legislature. The Higgins Block includes the gray granite, copper-domed corner building and the red poly-chromed brick structures to the north and east. This National Register building, was restored in the early 1980s and is home to several businesses today.



11. Masonic Temple 120-136 E. Broadway

Built in 1909, the Masonic Temple is the only Beaux Arts style building in Missoula's central business district. Particularly notable for its arched bays, elaborate terra cotta cornice, frieze work, and its elevator, the building still serves as home to the Masons in addition to numerous office and retail businesses.

12. Federal Building 200 E. Broadway

Designed in the Italian Renaissance revival style and constructed of Indiana limestone and granite, this building was formerly called the Federal Building. The original building was erected between 1911-1913, and the east addition was built in 1929. The north addition was erected in 1937. Listed on the National Register of Historic Places the building housed the U.S. Federal District Court from 1929 to the mid 1990s.

13. Carnegie Library/ Missoula Art Museum 335 N. Pattee

Designed by A.J. Gibson and built in 1902-03, the Carnegie Library presents itself as a temple of learning in the style of Carnegie libraries across the country. Gibson's windows add a noticeable design aspect through their lighter-colored stone surrounds capped by keystones, which stand in high contrast to the dark brick walls. The second story, designed by Gibson's assistant, Ole Bakke, was added in 1913. The building currently houses the Missoula Art Museum. The modern addition to the south was added in 2006, and increased the usable area in the Museum by almost fifty percent.

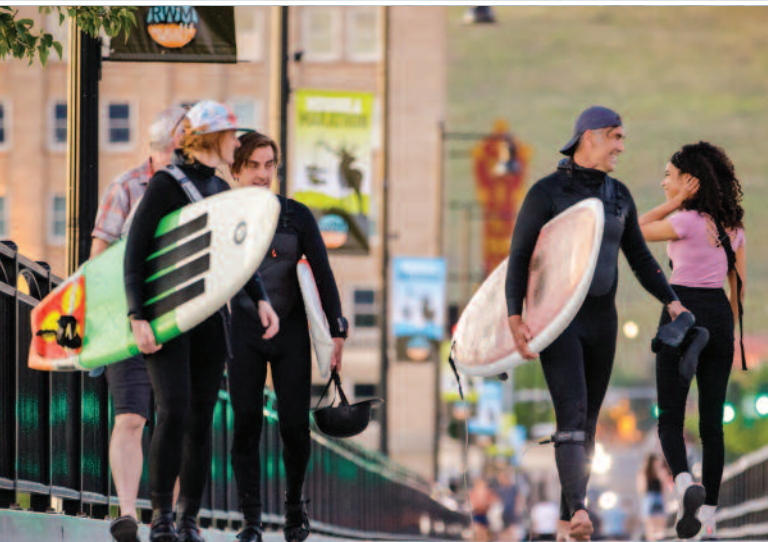
14. Northern Pacific Railroad Depot Railroad & N. Higgins

When the track of the Northern Pacific reached Missoula in 1883, it was possibly the most significant event in the town's history. Reliable transportation created a major economic and commercial distribution hub for Western Montana. This depot building was designed by Reed and Stem, a celebrated architectural firm from St. Paul, Minn., that designed over 100 depots in America, including New York City's Grand Central Station. Built in 1901, this National Historic Register building is an architecturally significant example of simplified Renaissance Revival architecture, which represents the historic importance of rail transportation to this city.

15. St. Francis Xavier Catholic Church 420 W. Pine

Constructed between 1891 and 1892, this church is a major religious, architectural, and artistic landmark in Missoula. Its 144-foot-high polygonal tent roof spire continues to be a landmark of the Missoula skyline. The interior of this National Register church contains murals painted around 1900 by Brother J. Carignano, who also painted the murals in the St. Ignatius Mission.







Downtown Tours & Sites

- 1 Public Art Tour
- 2 Historic Walking Tour
- Downtown Legacy Trail
- A Other National Historic Register Buildings

Missoula's Historic Districts

East Pine Street Historic District

Missoula's first exclusive residential area grew up along East Pine Street, and today it's one of Missoula's seven historical districts. The predominating man-made feature and unifying visual element of the District is its historic boulevard, which consists of approximately 15-foot-wide boulevards with large maple trees on each side of the street and a unique 25-foot-wide grass median. There are a variety of historic buildings, most of them are multi-family or single-family residences built between 1872 and 1940. All but six of the 50 major buildings were constructed before 1940. The district contains the city's oldest residence (Francis Worden House 1874), and the A.J. Gibson designed Governor Joseph Dixon mansion, both located in the 300 block of East Pine.

Southside Historic District

This colorful historic district charts Missoula's transformation from a rough frontier town to an established community. Anticipating a need to escape the flurry and bustle of Missoula's town center north of the Clark Fork River, Federal Judge Hiram Knowles platted this addition in 1890. By the mid-1890s, gracious Queen Anne style residences proclaimed the Southside as a wealthy haven. Between 1908 and 1910, the arrival of the Chicago, Milwaukee and St. Paul Railroad on the Southside's edge added the Milwaukee Depot. There are over 60 structures on the Southside Historic District walking tour.

University Area Historic District

Bounded by South 4th St. E., Beckwith Avenue, Arthur Avenue and Higgins Avenue, the University Area Historic District was officially placed on the National Register of Historic Places on December 13, 2000. Missoula's largest historic district, the University Area District contains some stunning examples of Queen Anne, Craftsman, and Revival styles of architecture.

Downtown Historic District

Bounded by the Northern Pacific Railroad, the Clark Fork River to the south, Missoula's historic downtown is Missoula's ninth Historic district. The district includes residential neighborhoods on both the east and west sides, as well as the mixed use historic core that grew up between the Northern Pacific Depot and the Missoula Mercantile, which was located next to the original Missoula Mill site. Including the East Pine Street Historic District, there are more than 450 contributing structures in the historic downtown district. More than 40 downtown buildings are individually listed in the National Register of Historic Places.

Additional Missoula area Historic Districts of interest:

- Northside Missoula Railroad Historic District
- Lower Rattlesnake Historic District
- University of Montana Historic District
- Fort Missoula Historic District
- McCormick Historic District

Other Downtown Buildings on the National Historic Register:

*See map
page 55*

- A. Atlantic Hotel**
519 North Higgins
- B. Belmont Hotel**
430 North Higgins
- C. Bluebird Building**
220 - 224 North Higgins
- D. Brunswick Hotel**
223 Railroad
- E. Forkenbrock Funeral Home**
234 East Pine
- F. Dixon-Duncan Block**
232 - 240 North Higgins
- G. Garden City Drug**
118 North Higgins
- H. Grand Pacific Hotel**
118 West Alder
- I. Hammond Arcade**
101 South Higgins
- J. Hellgate Lodge**
120 North Pattee
- K. Independent Telephone Co.**
207 East Main
- L. Knowles Building**
200 - 210 South 3rd West
- M. Labor Temple**
208 East Main
- N. Lenox Flats**
300 - 306 West Broadway
- O. Lucy Building**
330 North Higgins
- P. Marsh & Powell Funeral Home**
224 West Spruce
- Q. Milwaukee Depot**
250 Station Drive
- R. Missoula Laundry Company**
111 East Spruce
- S. Model Laundry & Apartments**
131 West Alder
- T. Montgomery Ward Building**
201 North Higgins

Downtown Legacy Trail

Created by Heritage Missoula, a program of the Downtown Missoula Partnership, the Downtown Legacy Trail leads audiences through a heritage experience that includes interpretive signage and storytelling in a self-guided format.

Medallions along the trail guide users to points of interest, where you can make meaningful connections to the shared human experiences represented here.



See map page 55





Parking Downtown

Missoula Parking Commission invests meter revenues into many worthwhile Downtown projects and parking structures.



Parking Information:

- At **Central Park, Park Place, and ROAM** the first hour is free.
- For **metered parking**, pay with the Passport Parking app OR at the multi-space parking kiosk on each block.
 - Payments are made using your license plate
 - Kiosks accept cards or coins
 - *Moving in your zone?* The time goes with you!
- Parking is free after 5pm Mon-Fri. on streets—6pm in garages, on weekends, and on Montana State observed holidays.
- **For more information** contact the Missoula Parking Commission.
128 W. Main St. • (406) 552-6250 • ci.missoula.mt.us/parking

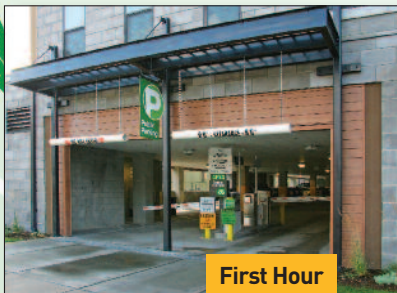


Missoula Parking
Commission



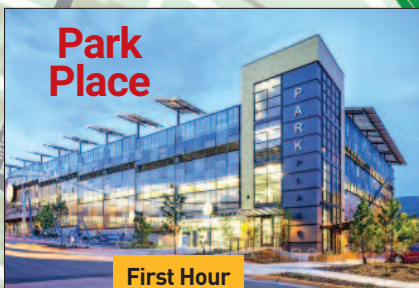
Exit
104

ROAM



**First Hour
FREE!**

**Multi-Space
Parking Kiosks**



**Park
Place**

**First Hour
FREE!**

**Central
Park**
Parking
Commission
Office

**Caras
Park**

Park Place

**Bank
Street**

ROAM

**Kiwanis
Park**

Trail System

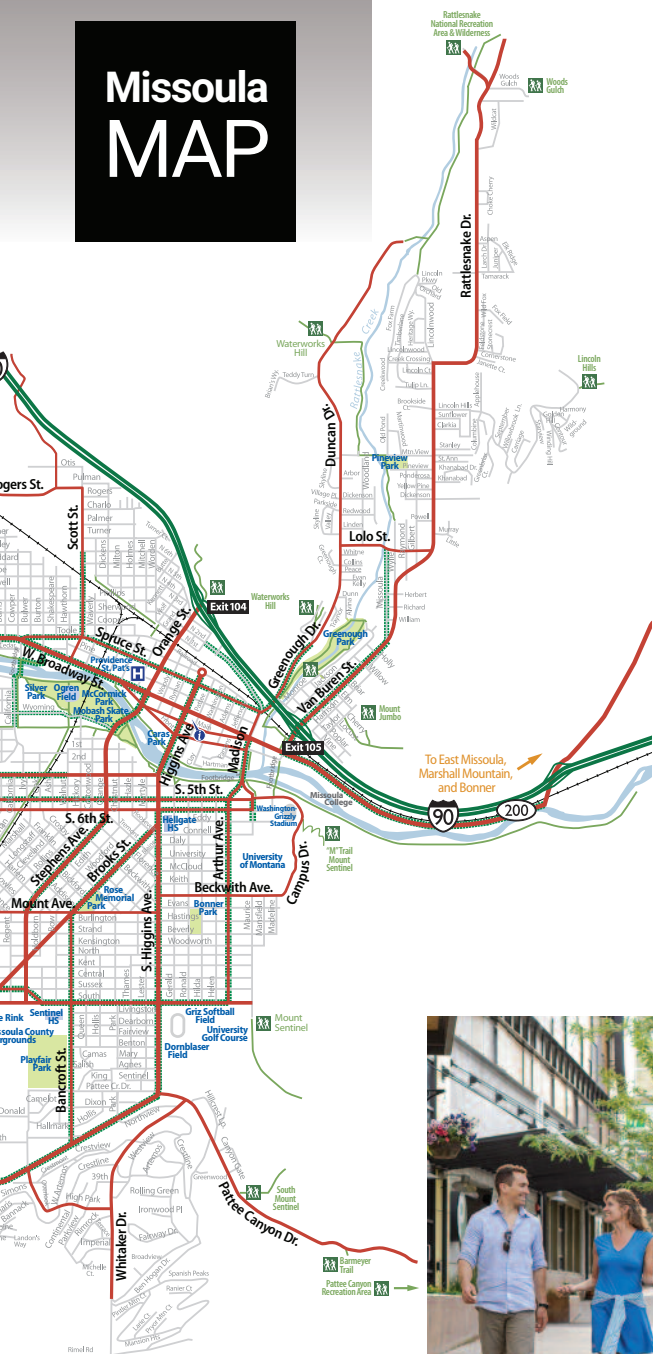
Park. Pay. Be on your way.



1. Download the **Passport Parking** app from the Apple App Store or Google Play store
2. Create an account with your mobile phone number or email address
3. Park anywhere you see **Passport Parking** app signs & decals
4. Pay for your parking session from your phone
5. Extend your time remotely if you'd like to stay longer!

Zone 4061 - Short-term, On-street • **Zone 4062** - Long-term, Street
Zone 4063 - Bank St., E. Front & New Park Lots • **Zone 4064** - Caras Park Lot
 • **Zone 4065** - West Front Lot • **Zone 4065** - Riverside Lot

Missoula MAP



Downtown MAP



0 Scale: 1/8 mi

— Main Thoroughfares ——— Bike Paths

missouladowntown.com

Notes:



**COFFEE. ICE CREAM.
MASSAGES.
CLOTHING. PINTS.
DATE NIGHTS.**

One Card. Endless Possibilities.



Accepted at over 200 locations. Missoula Downtown Gift Cards can be purchased at the Downtown Missoula Partnership (218 E. Main), Paddleheads Post (140 N. Higgins), or online at missouladowntown.com.

